

EVALUATION QR CODE!

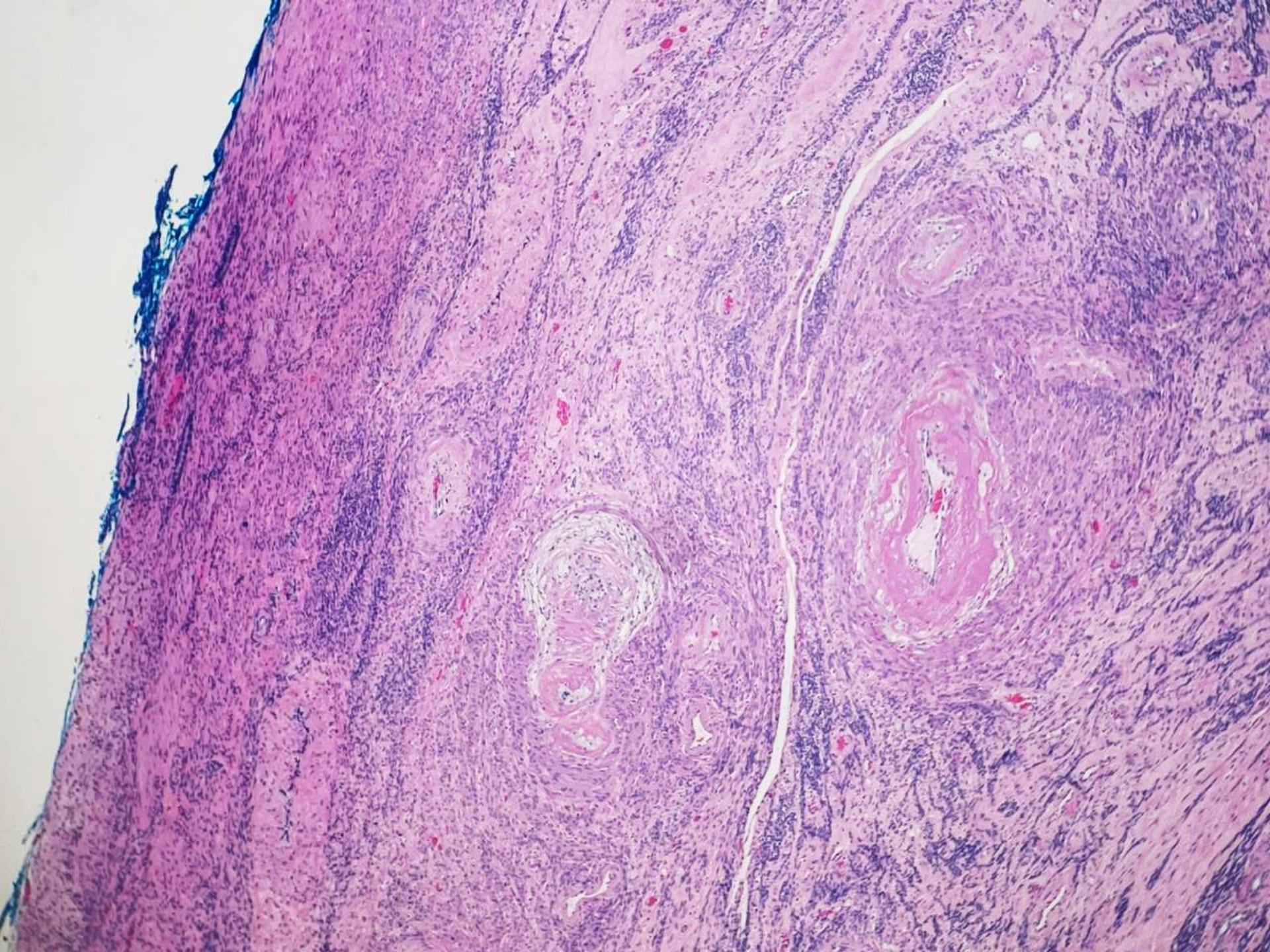
Hold smartphone camera on code

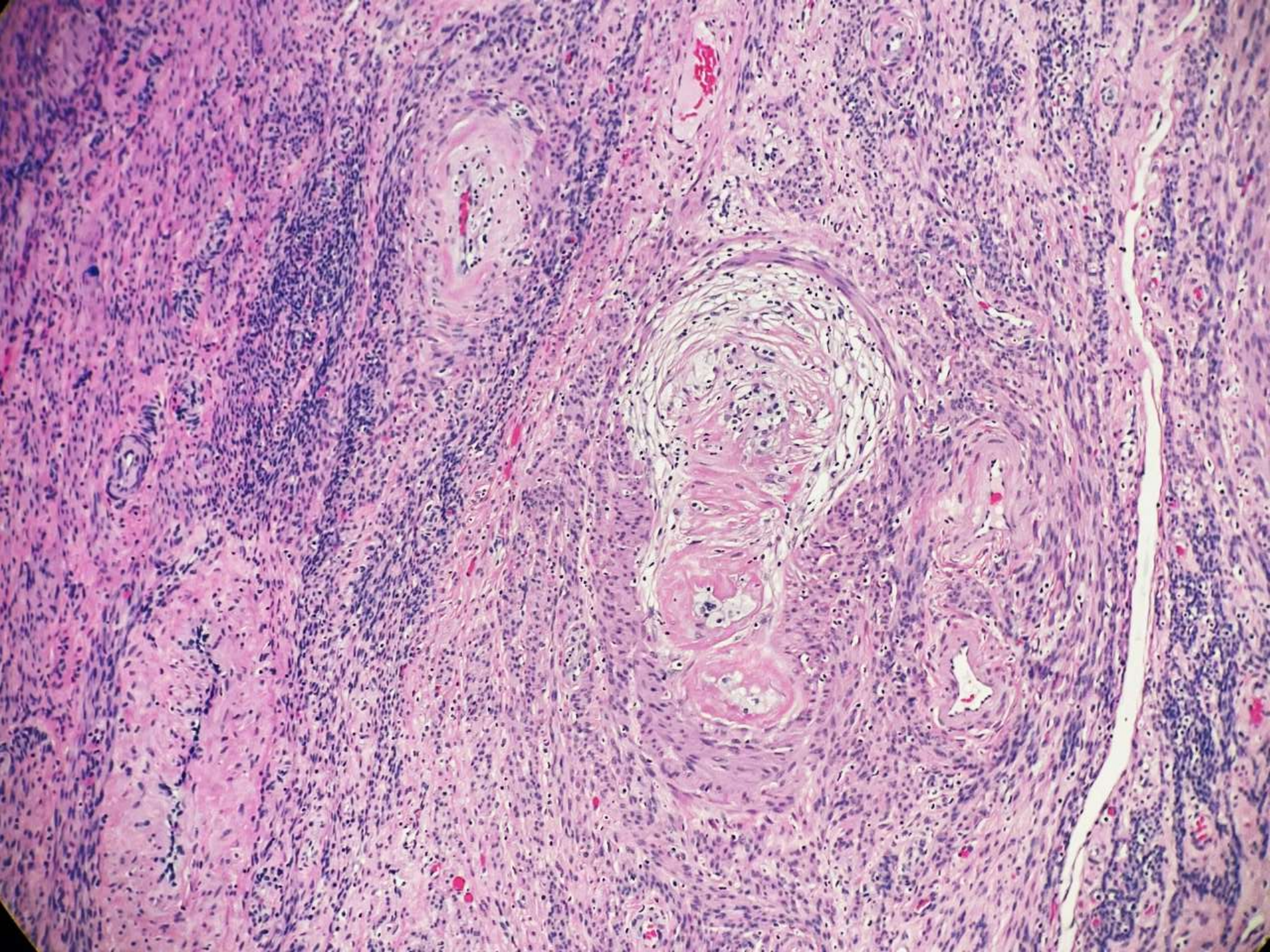


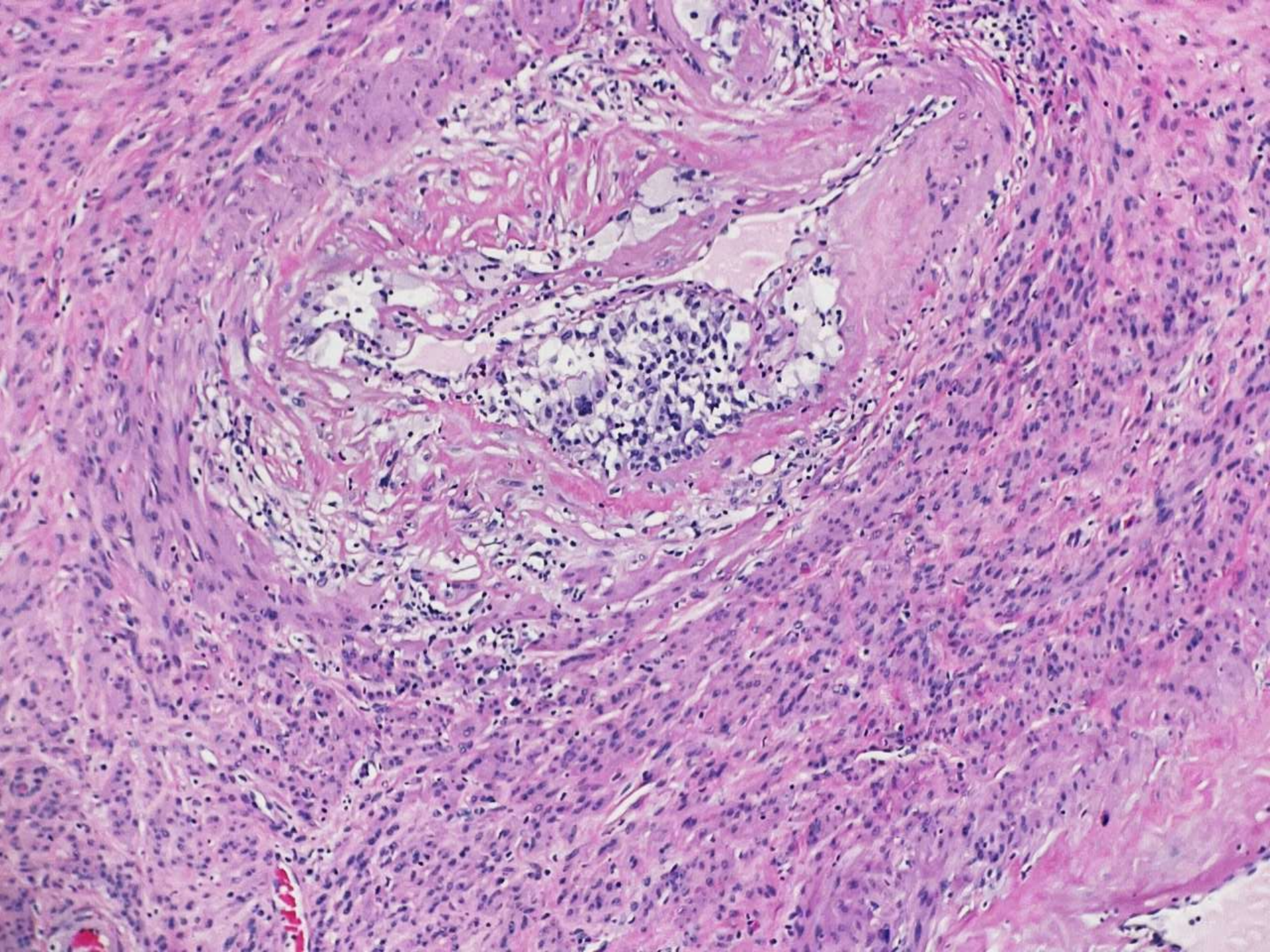
22-1201

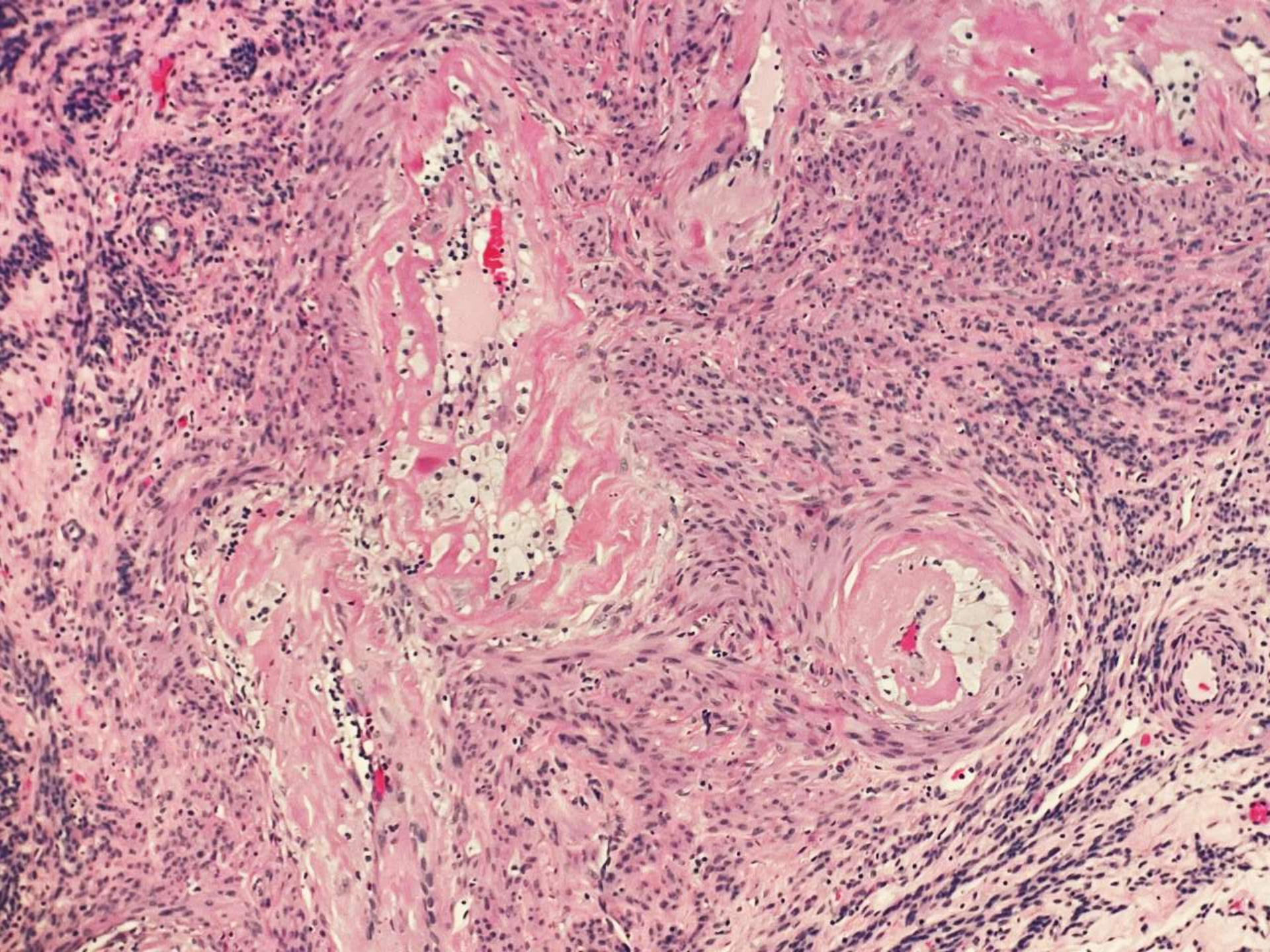
Harris Goodman; Alameda Health

30ish F with heavy menses requiring transfusion.
Specimen submitted is “prolapsing fleshy mass protruding through external cervical os.”









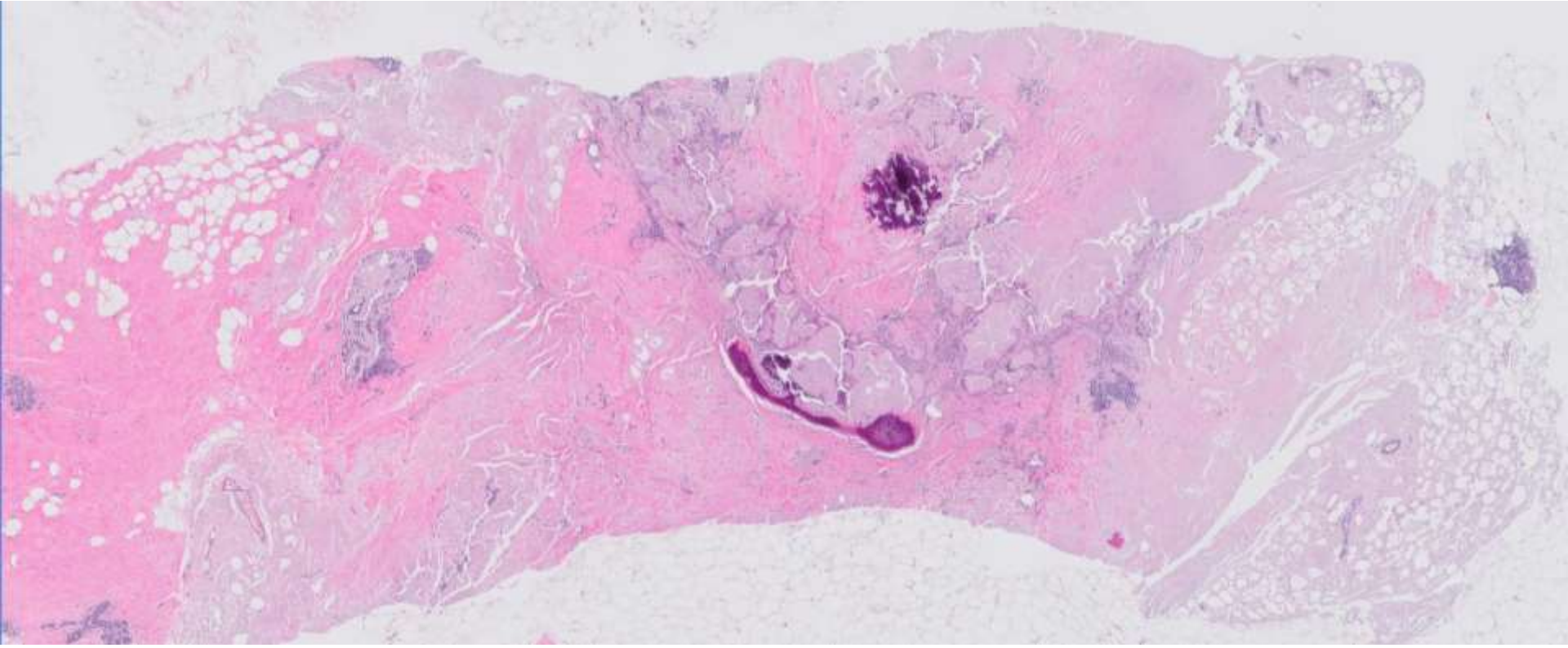
DIAGNOSIS?

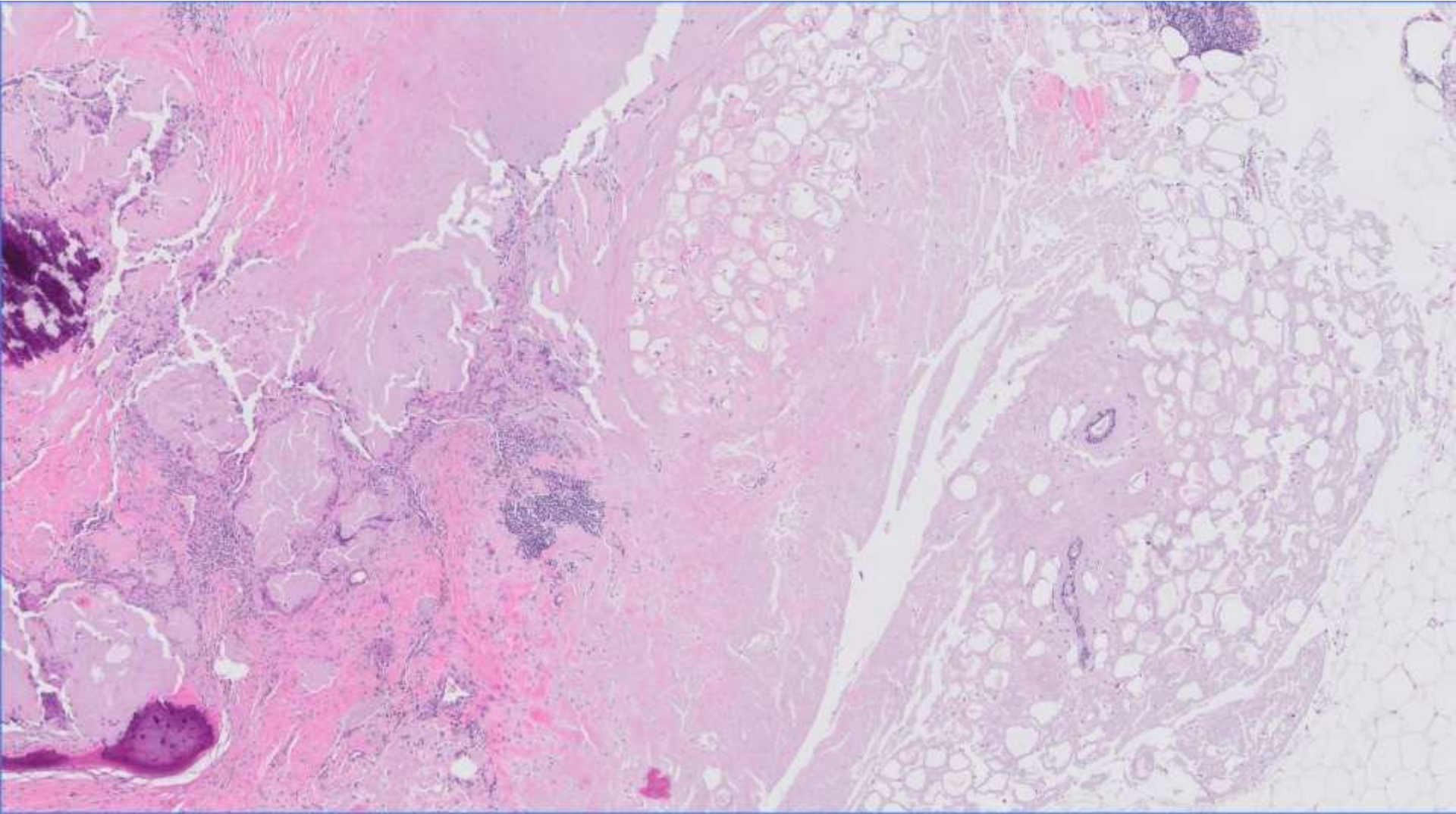


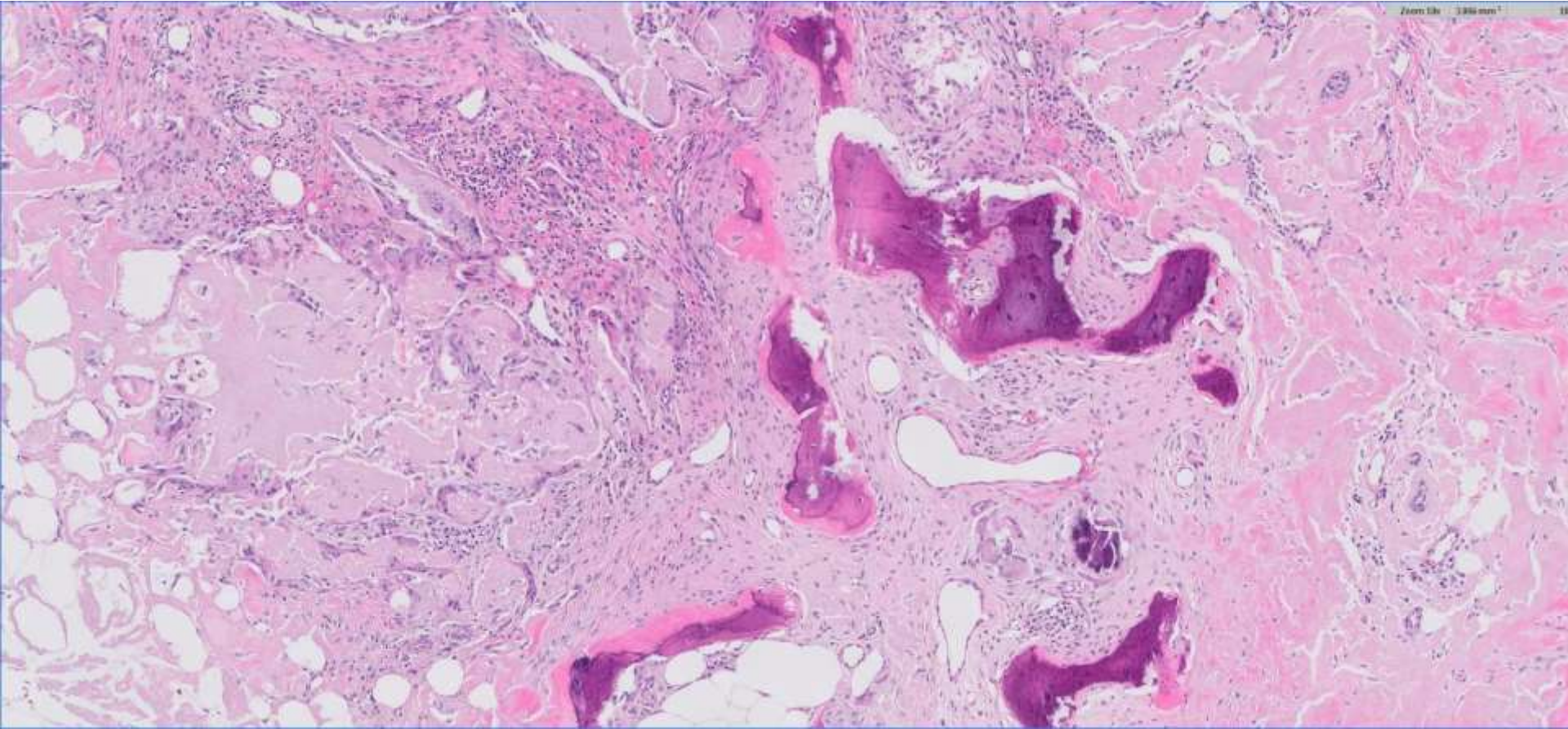
22-1202

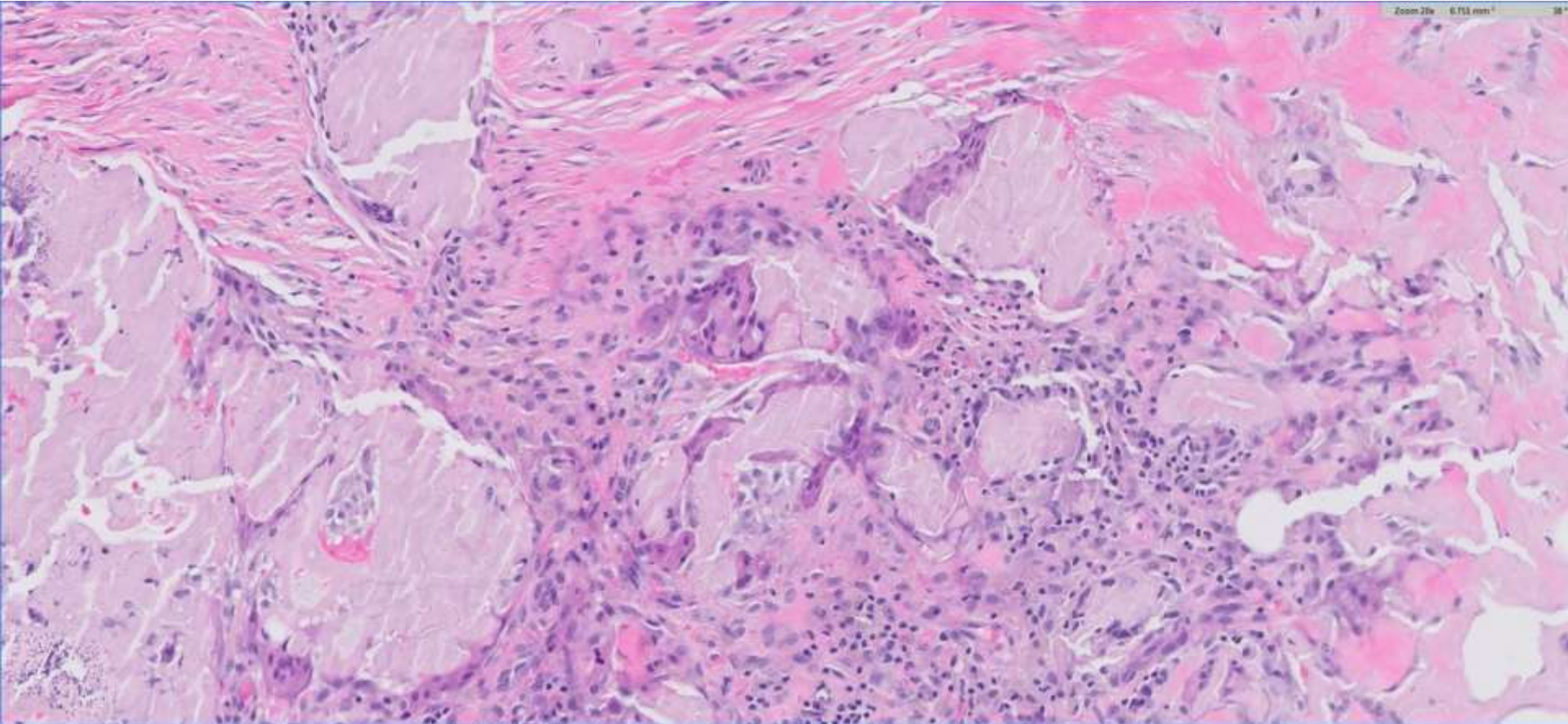
Rabia Bhalli/Megan Troxell; Stanford

60ish F with new breast calcifications. History of auto-immune disease.









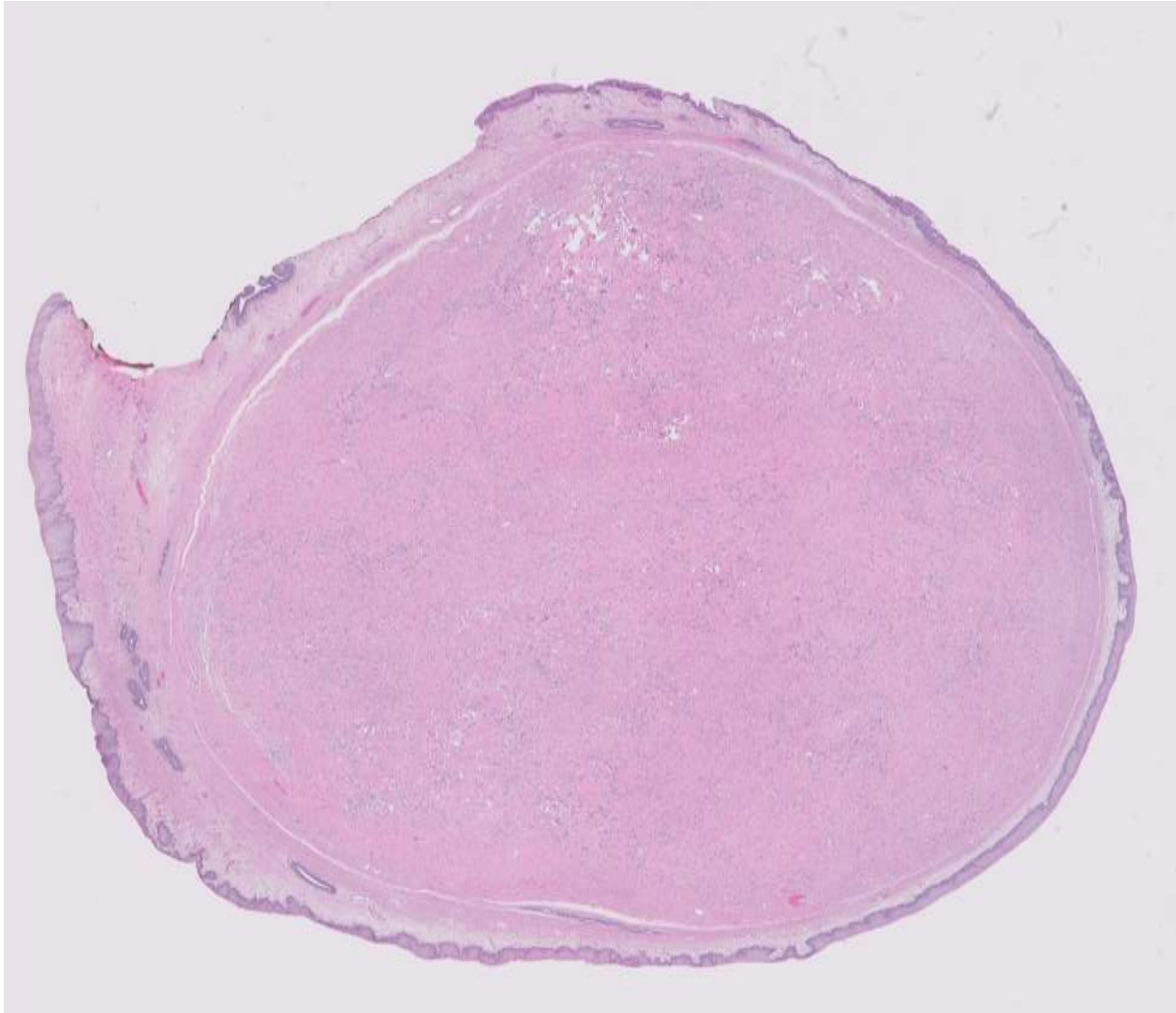
DIAGNOSIS?

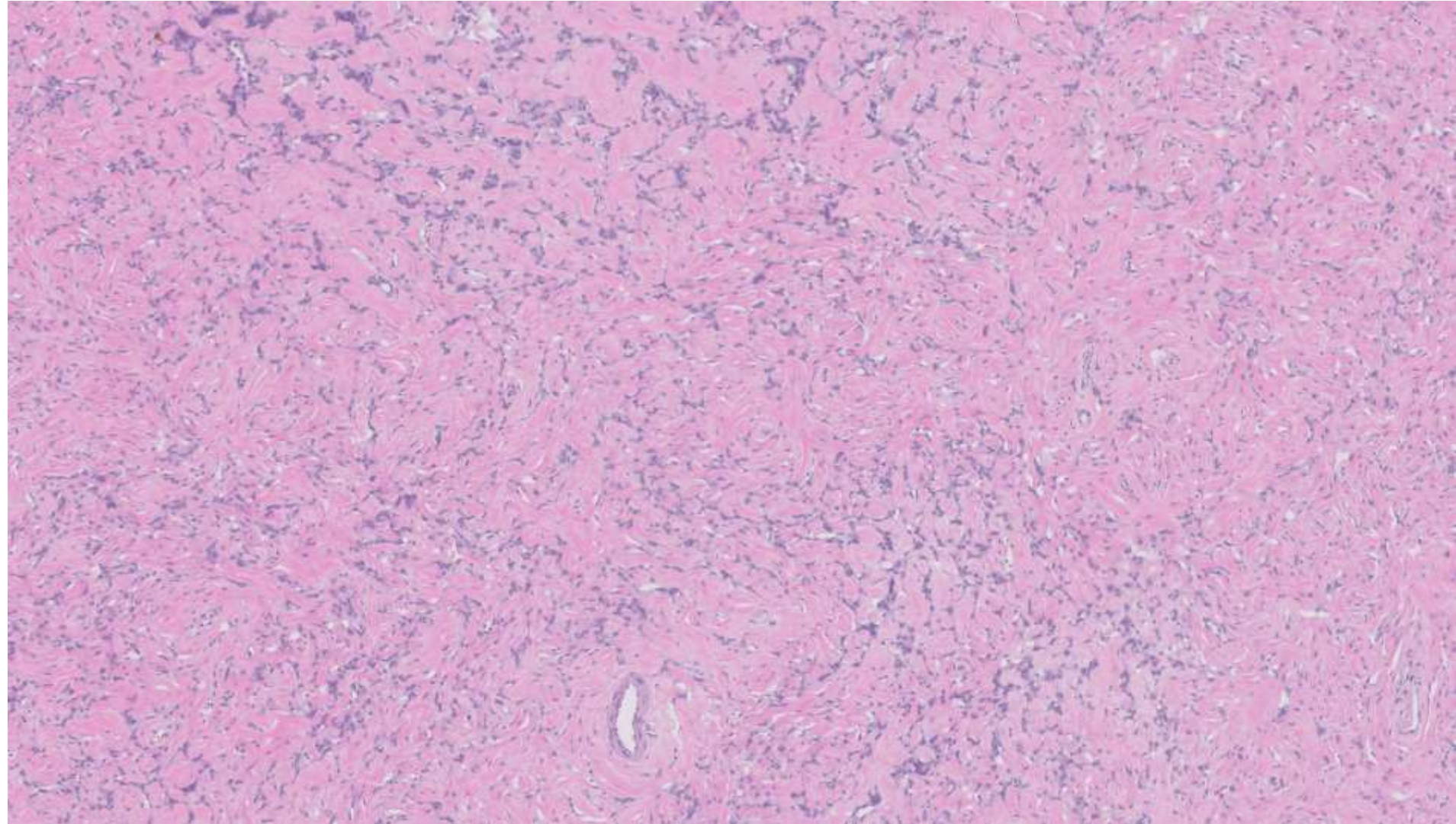


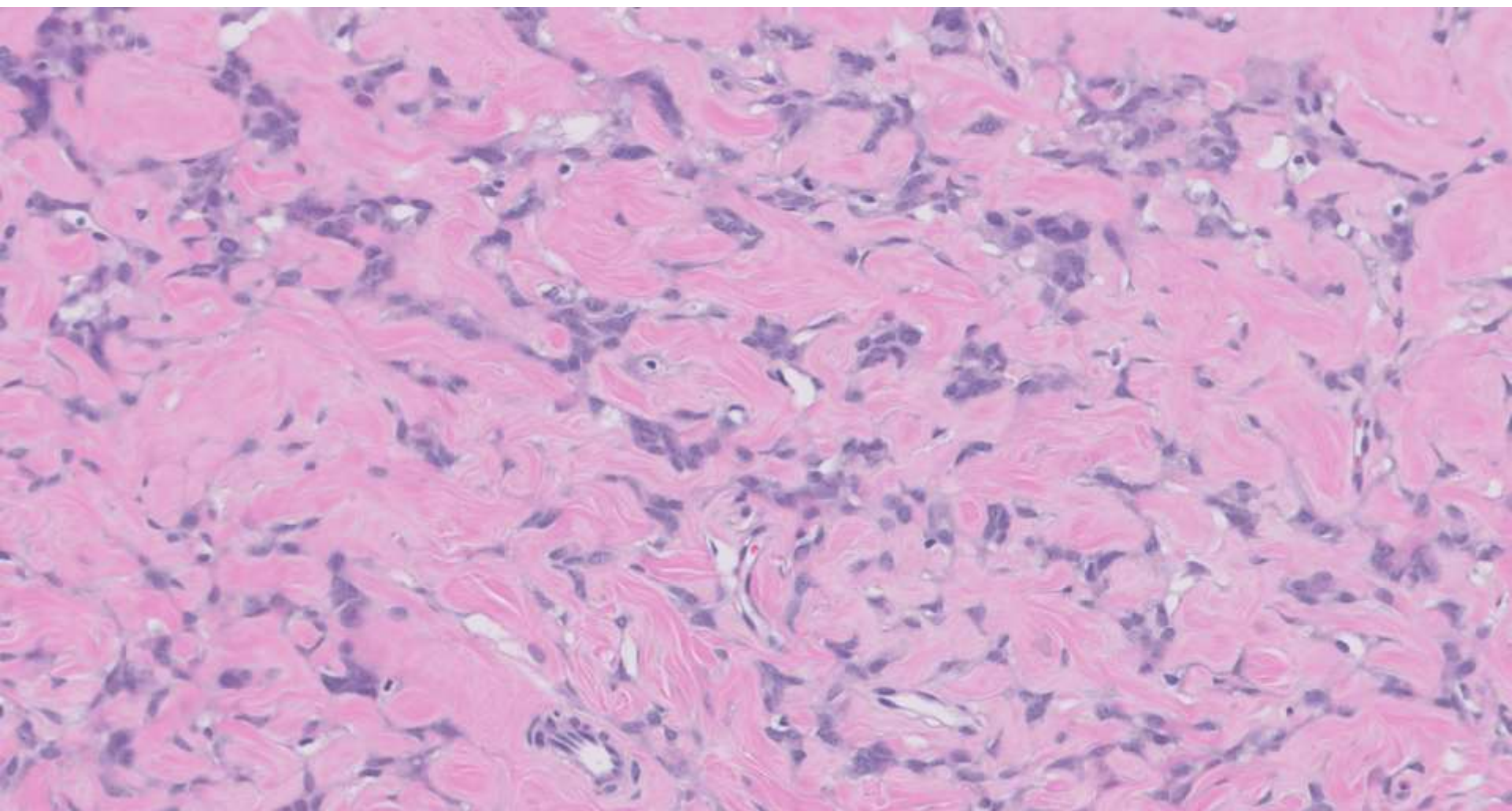
22-1203

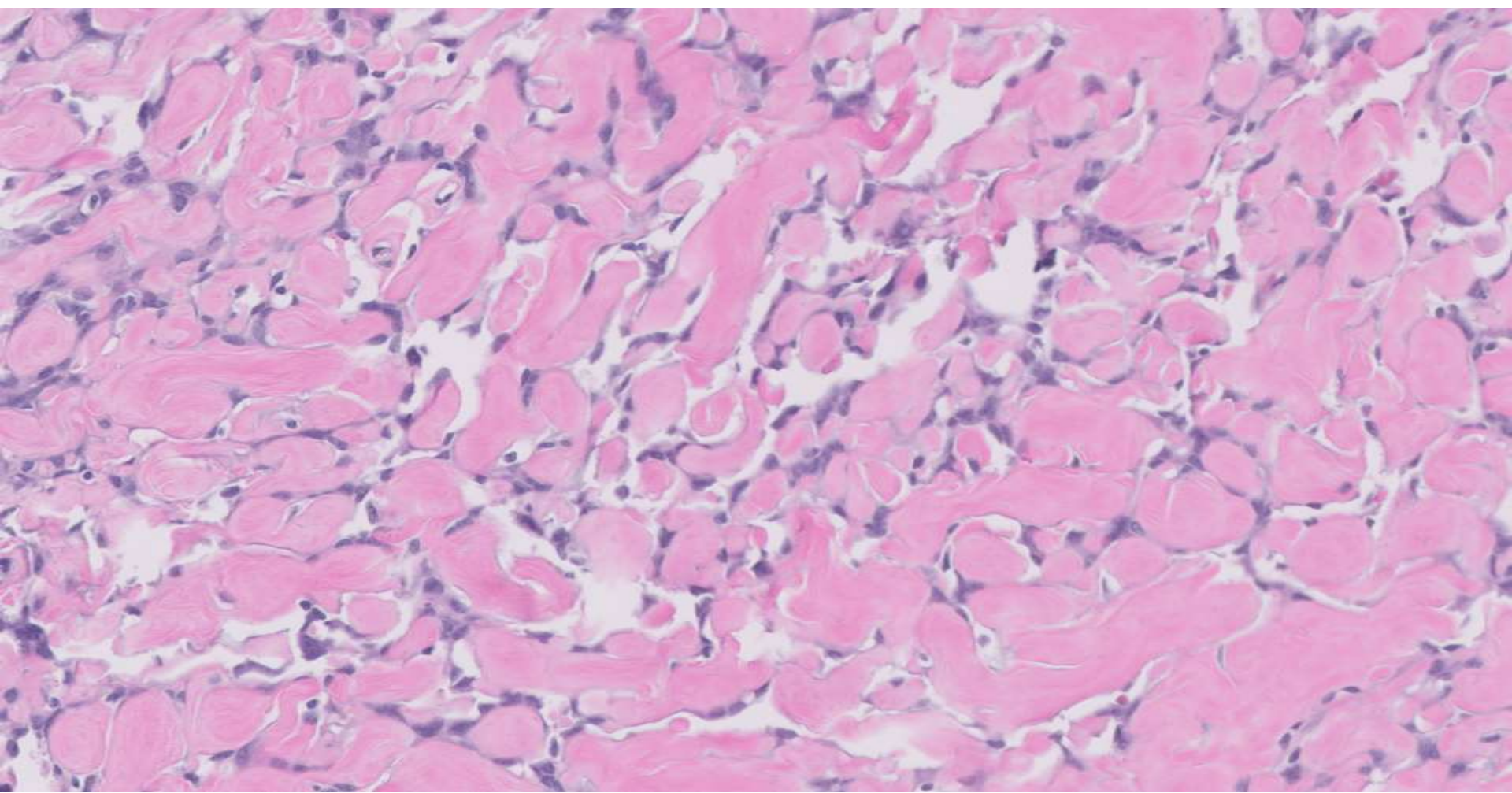
Troy Tenney/Teri Longacre; Stanford

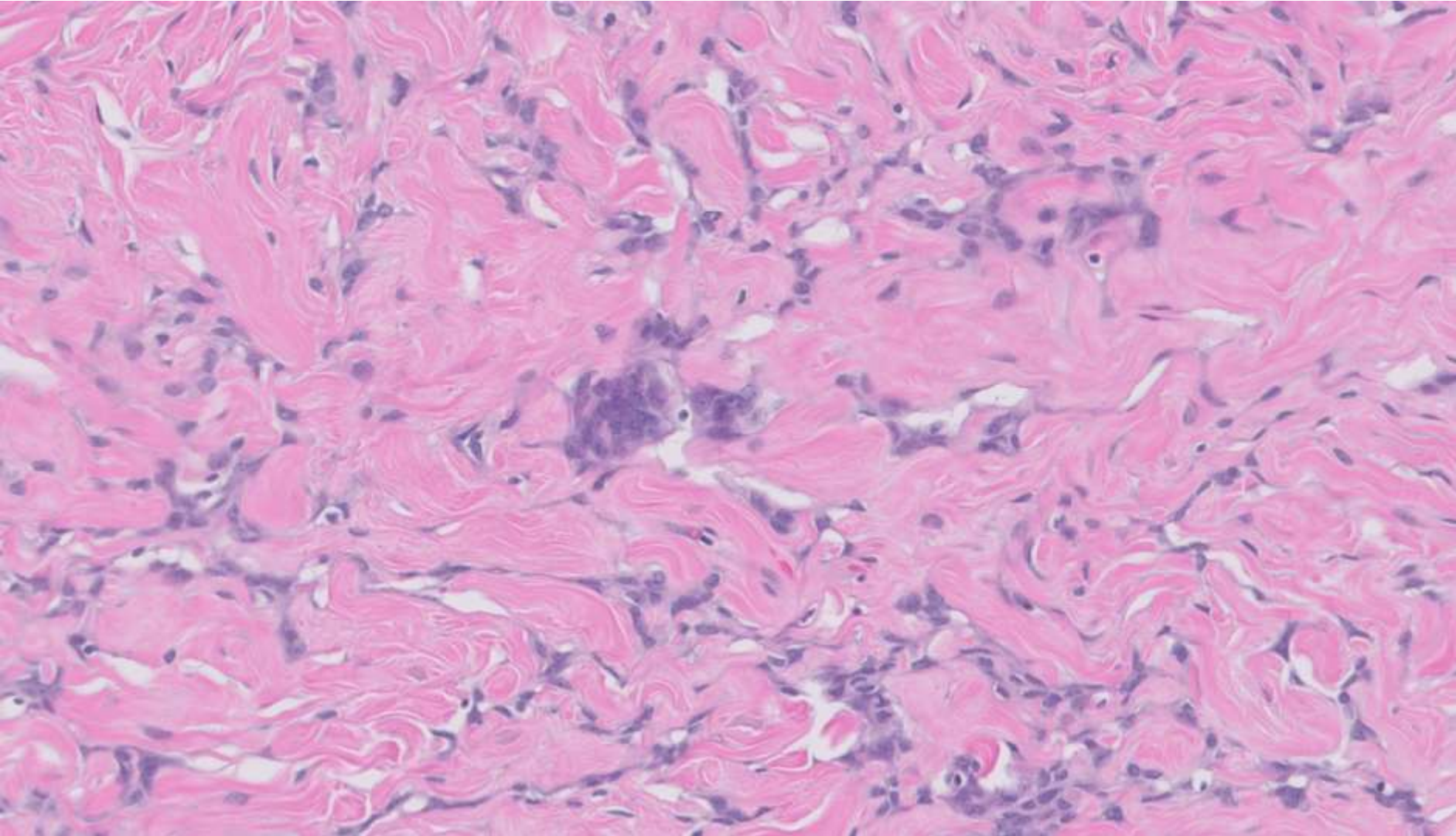
Post-menopausal F with h/o vaginal mass and hematuria. Vaginal mass submitted.











DIAGNOSIS?



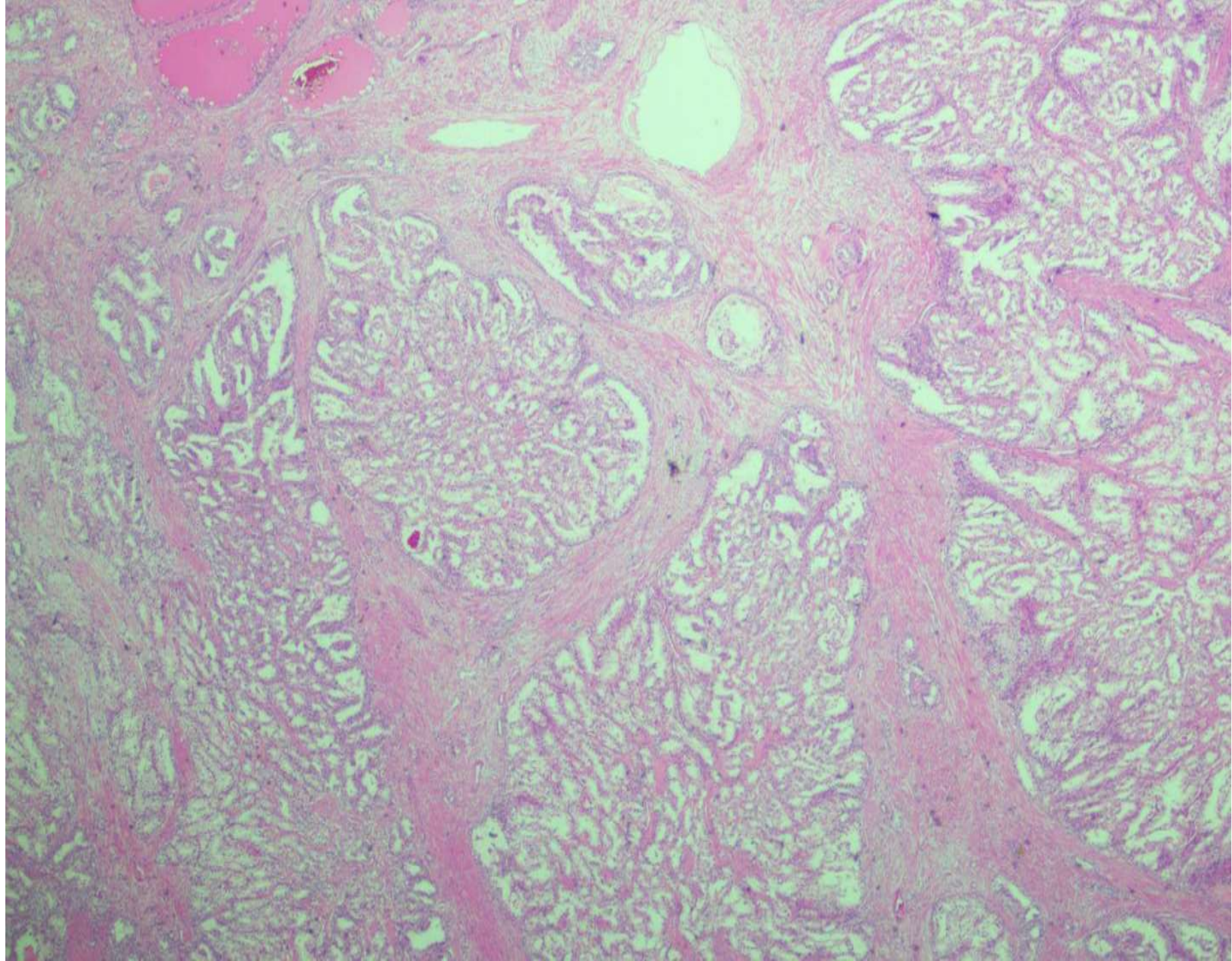
22-1204

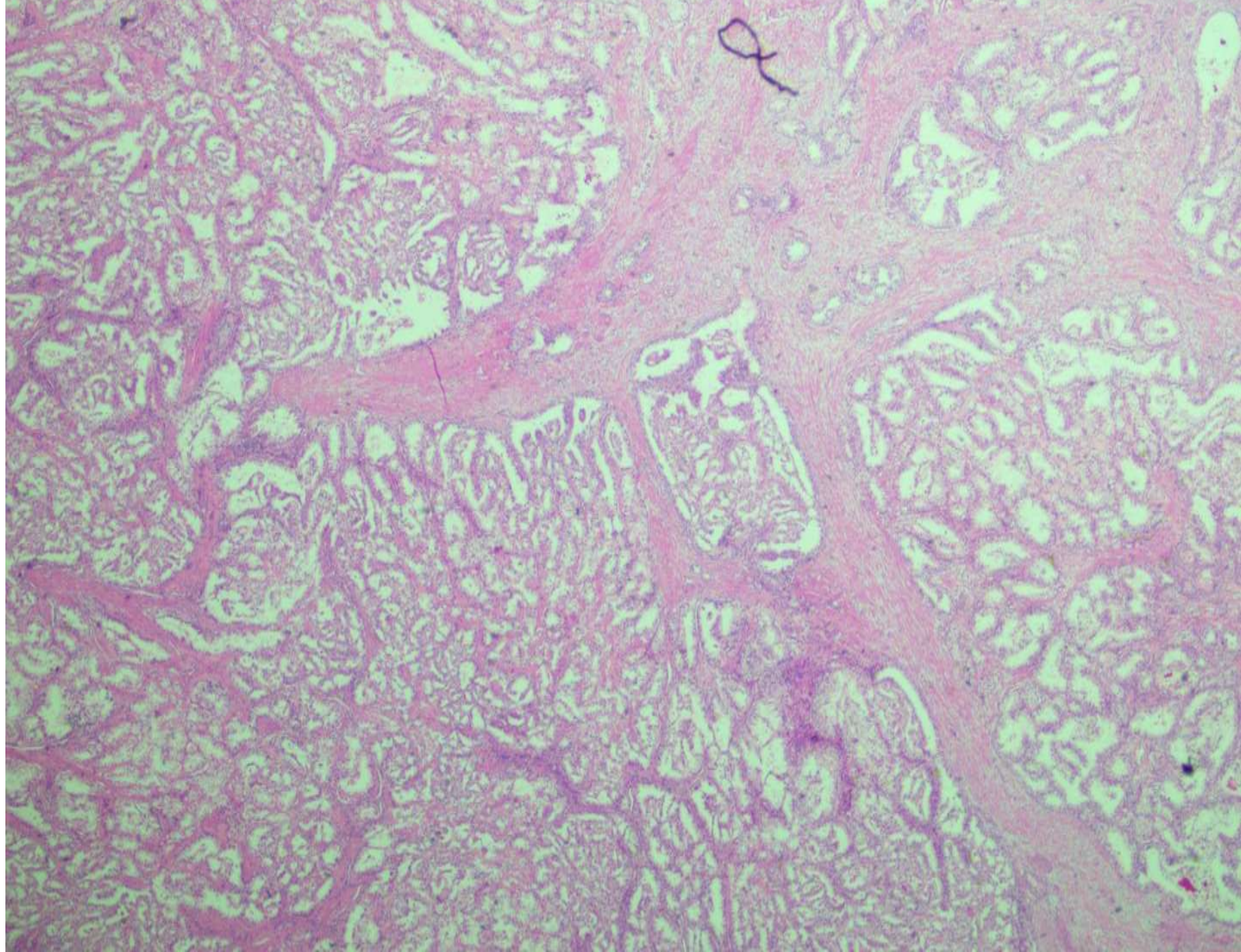
Direct link to scanned slide:

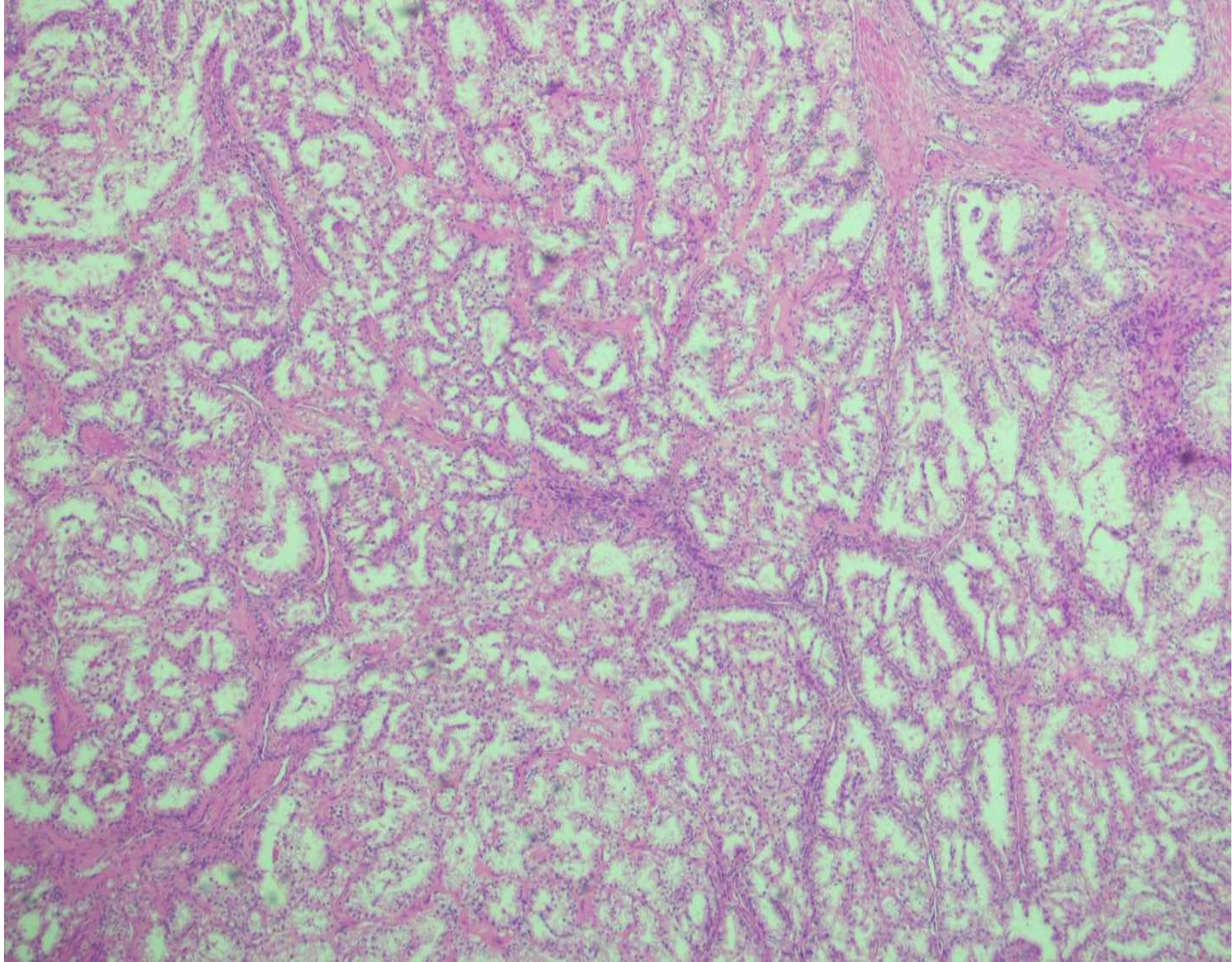
<https://pathpresenter.net/public/display?token=5ac976f2>

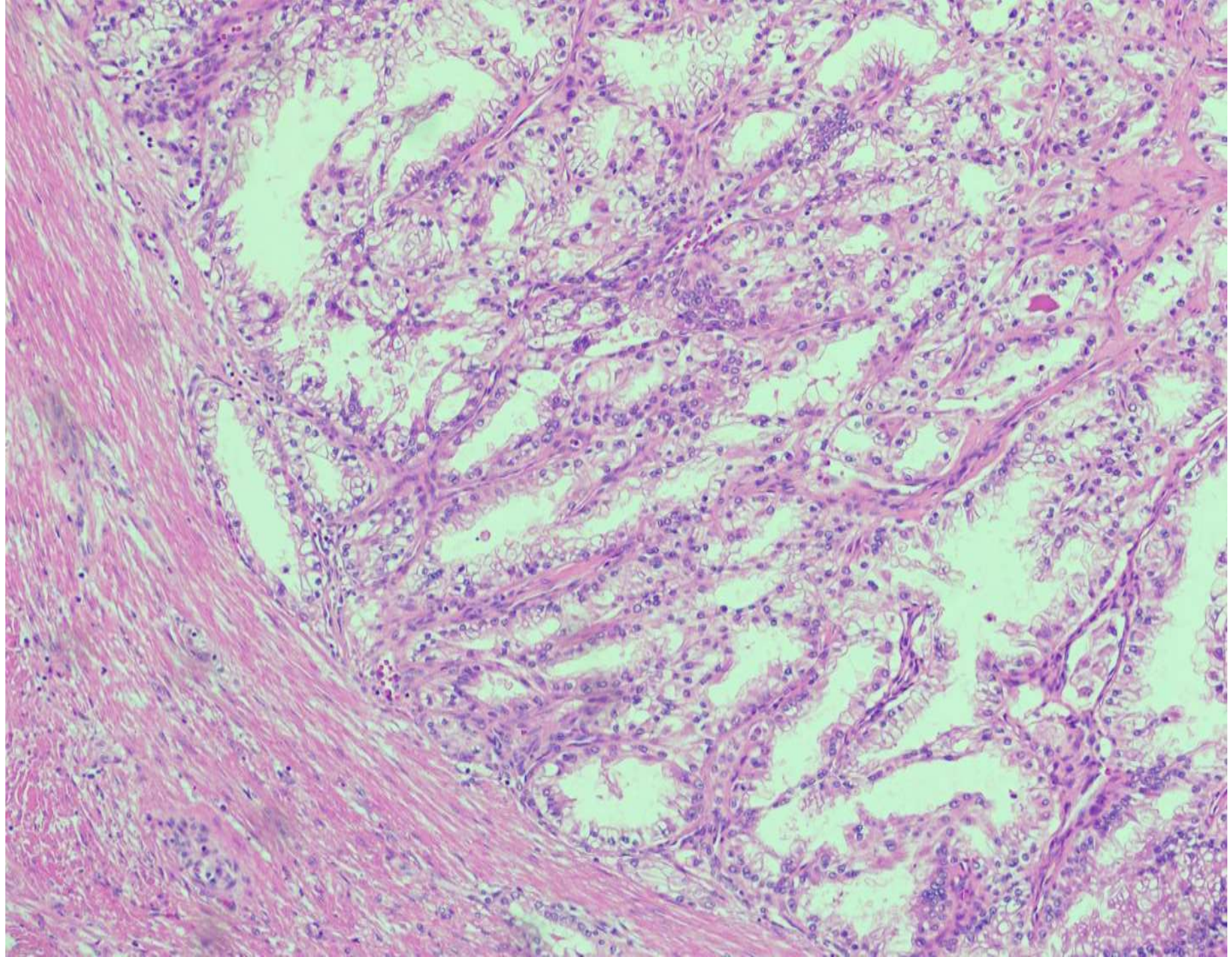
Armen Khararjian; Walnut Creek

Middle-aged M with 6.3cm renal mass.









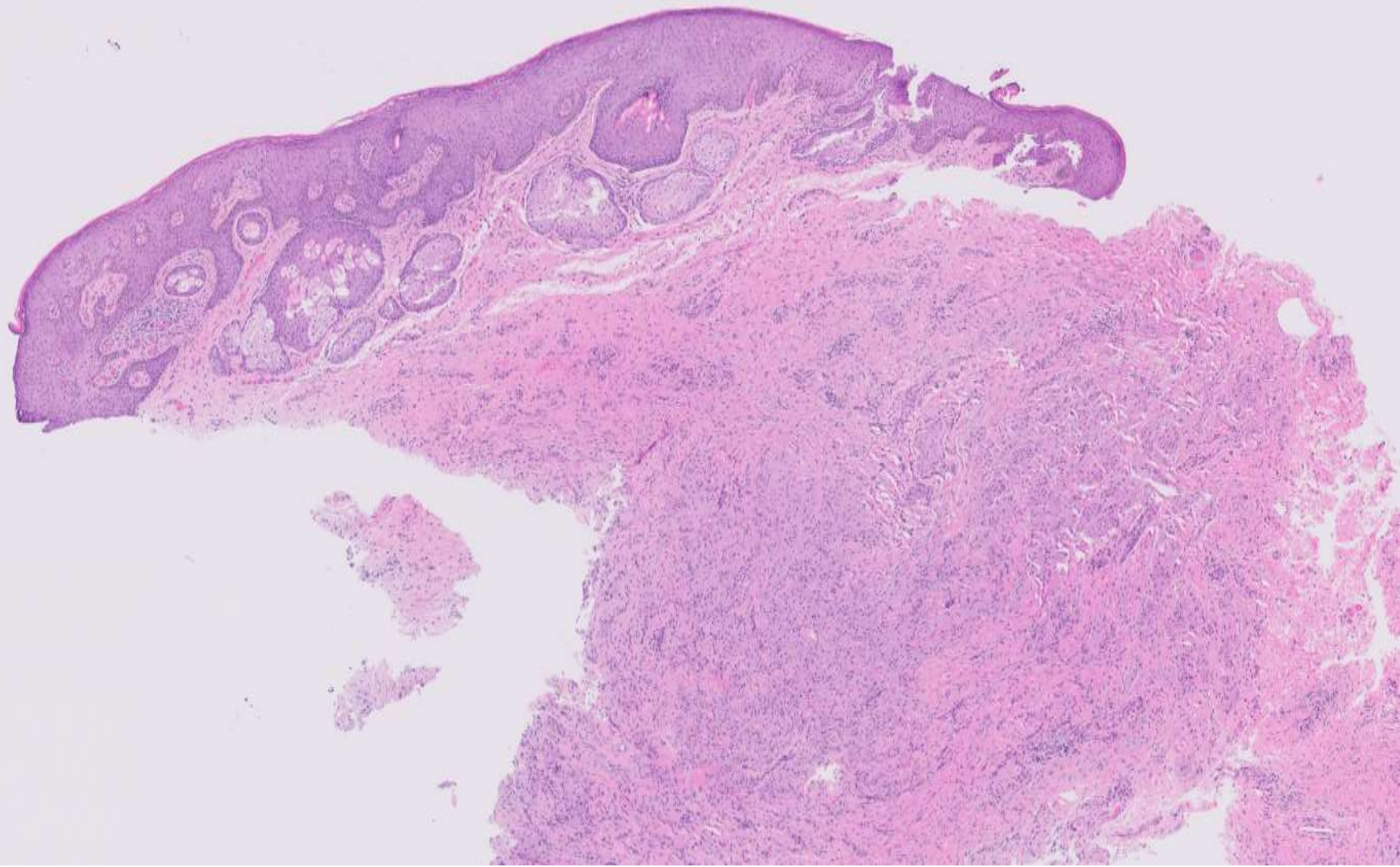
DIAGNOSIS?

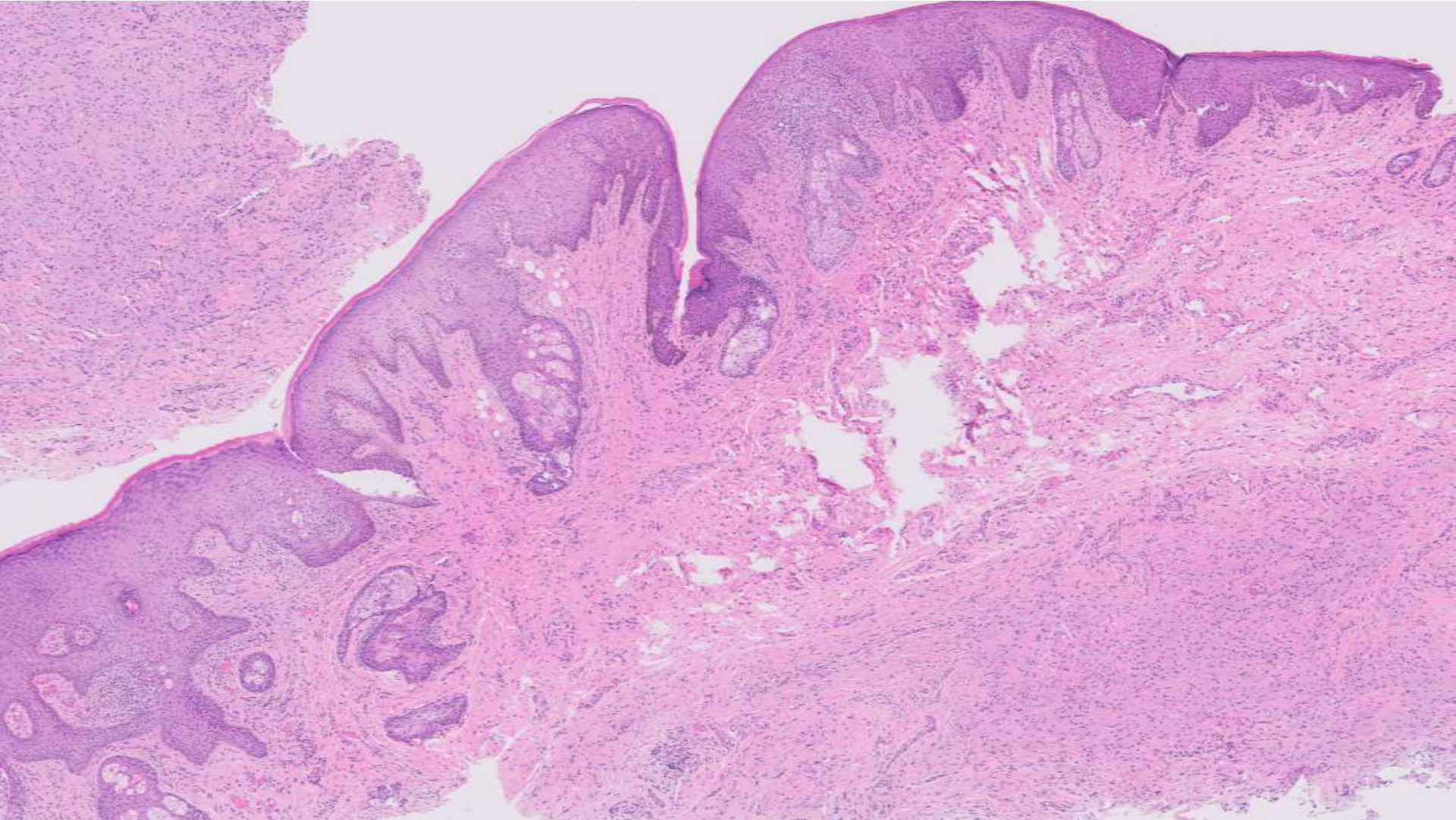


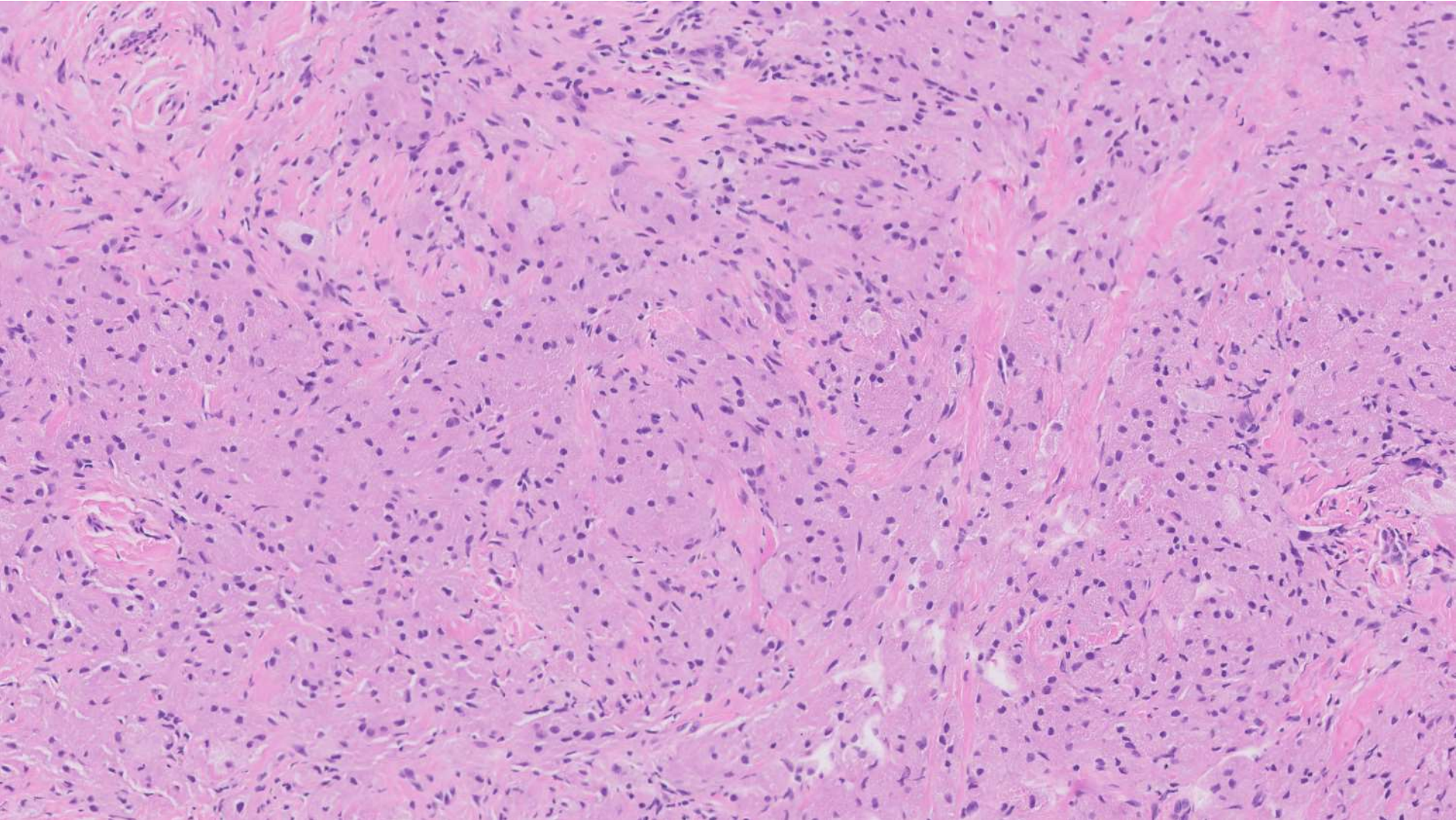
22-1205

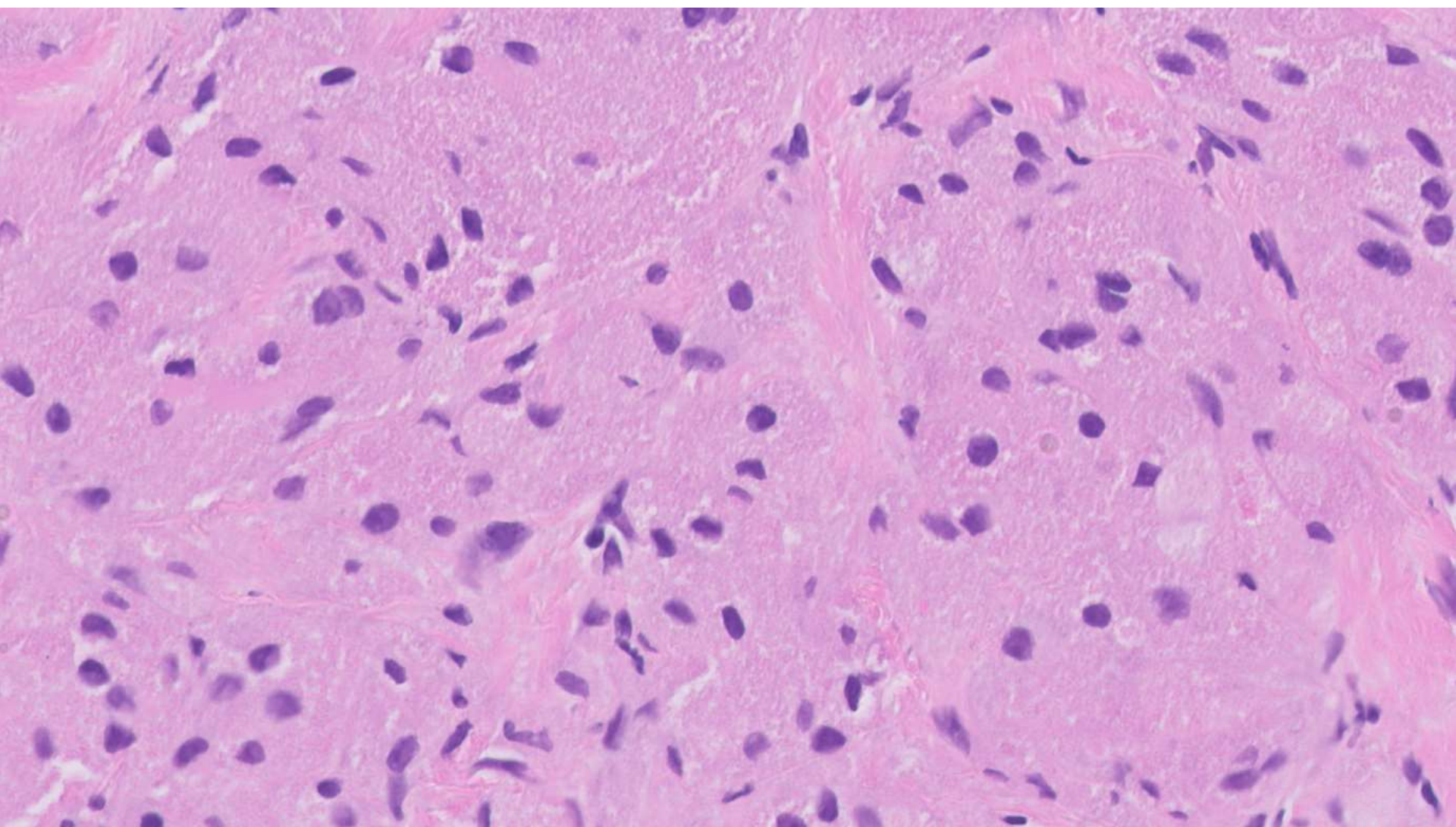
Troy Tenney/Teri Longacre; Stanford

50ish F with “vulvar cyst”.









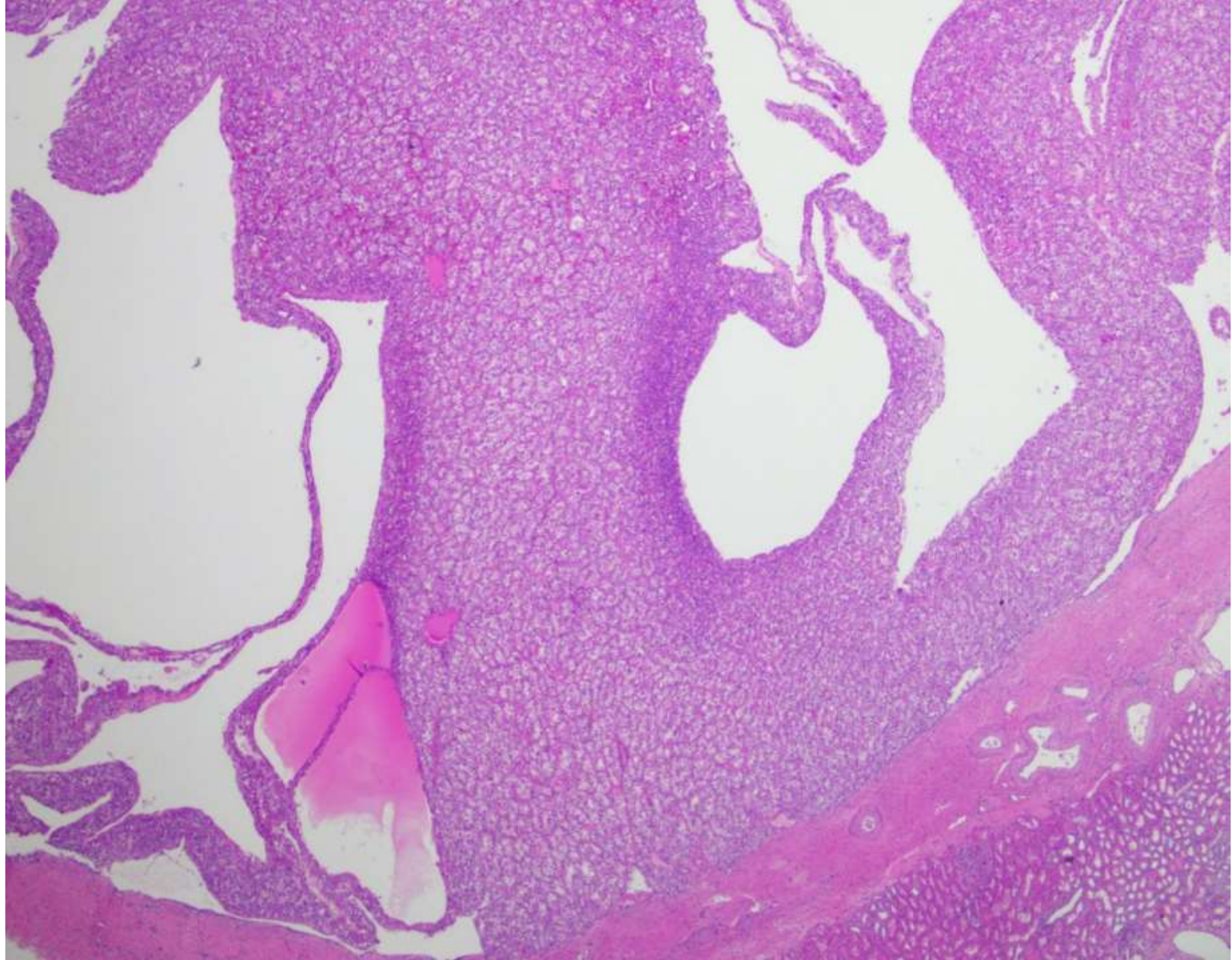
DIAGNOSIS?

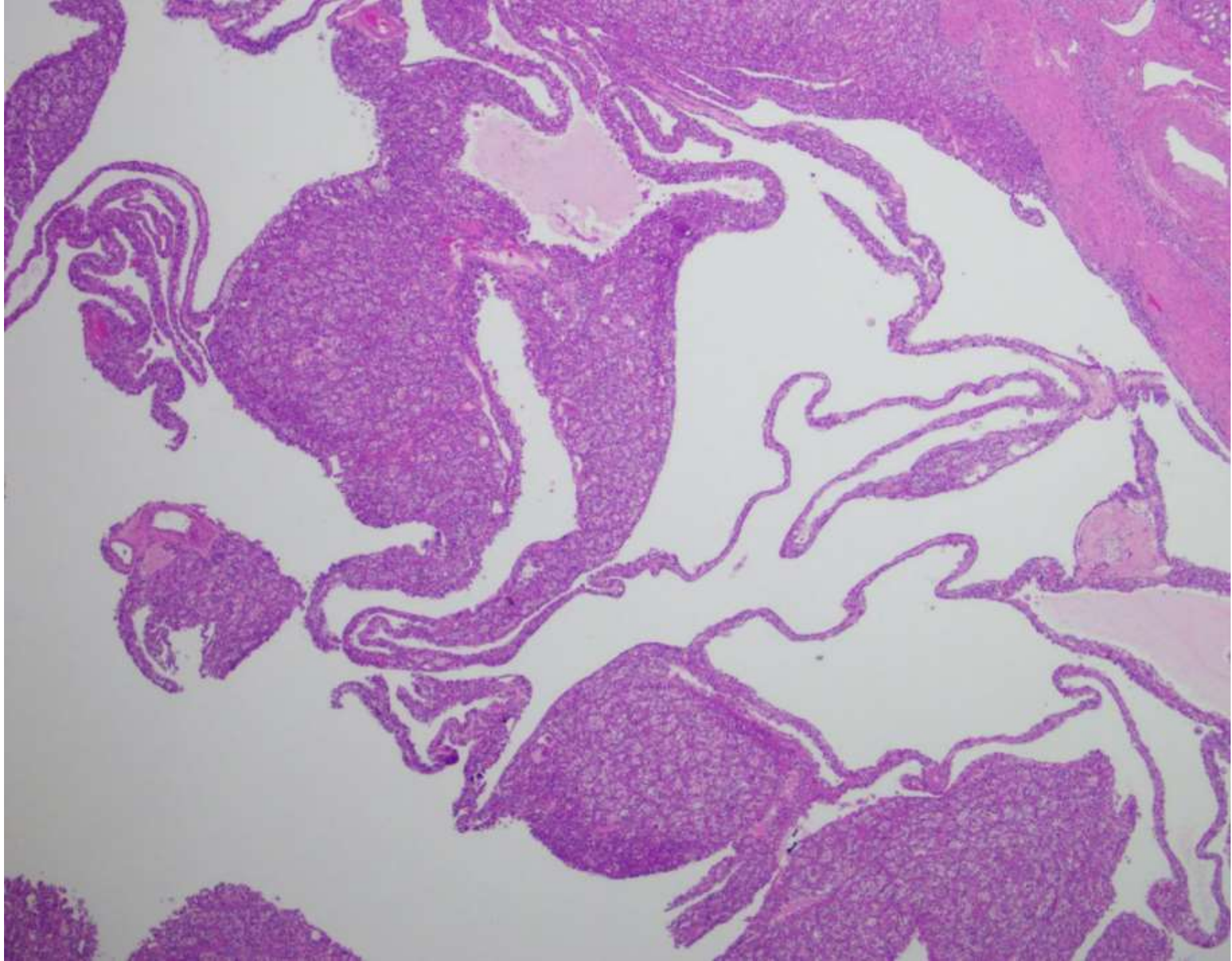


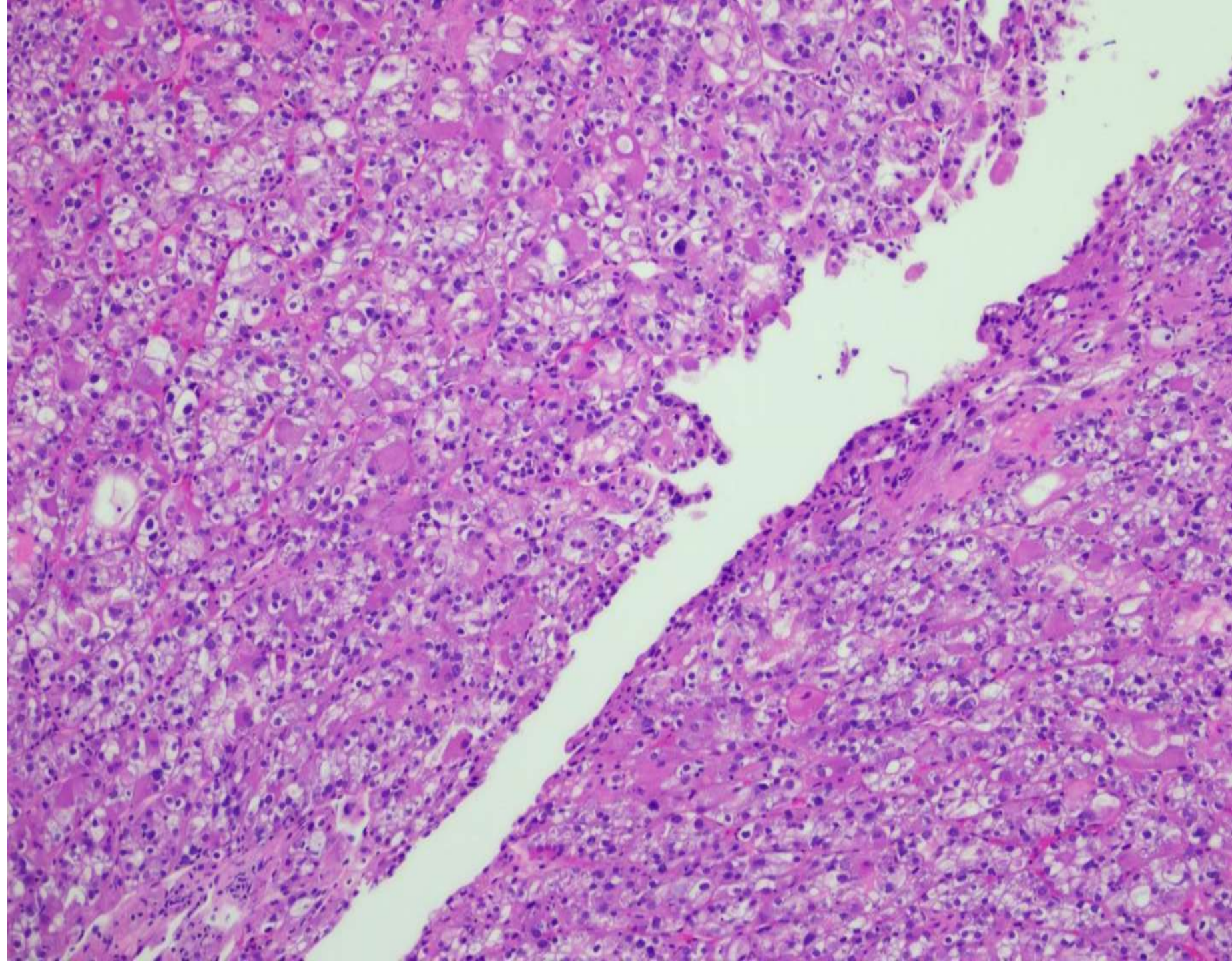
22-1206

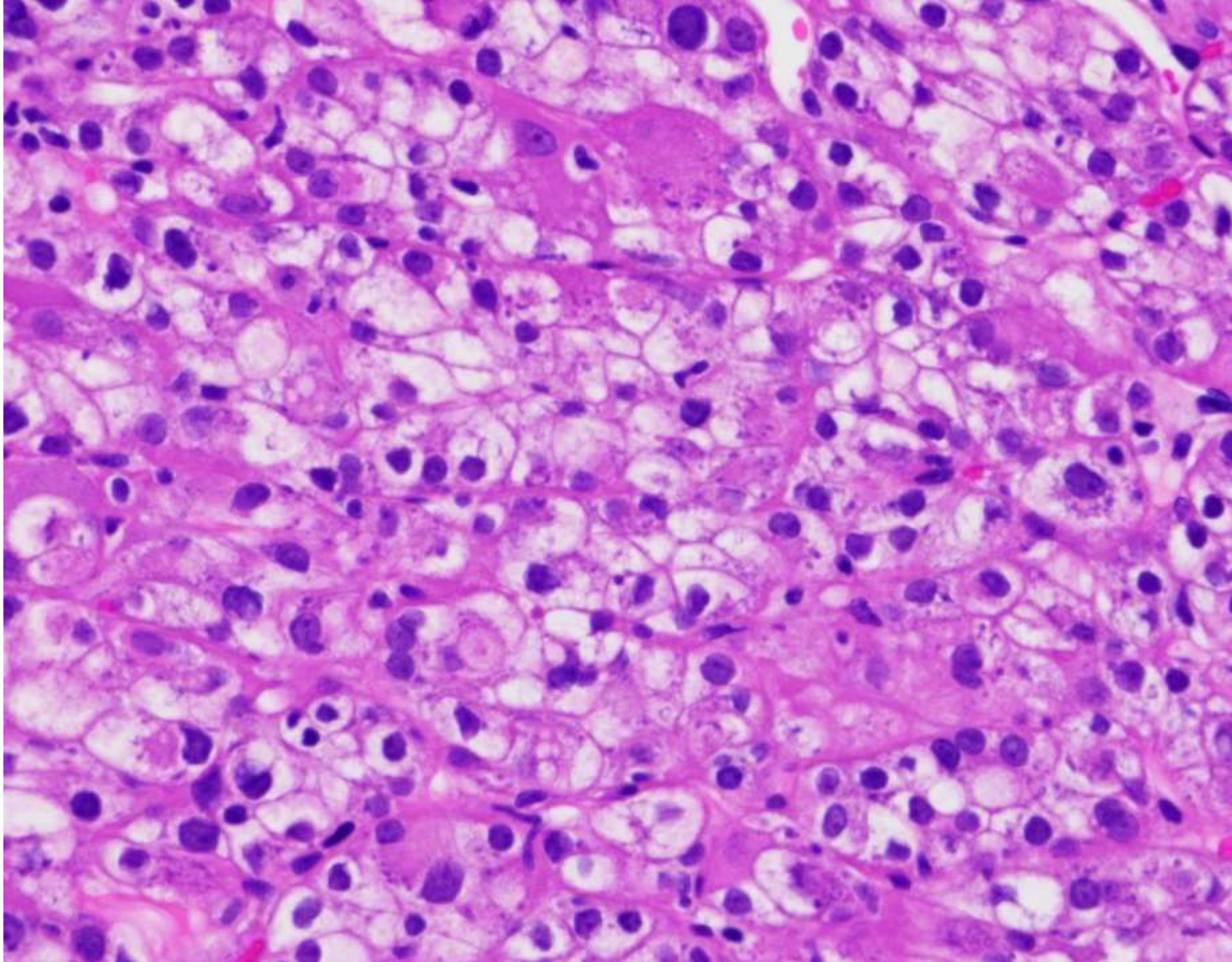
Armen Khararjian; Walnut Creek

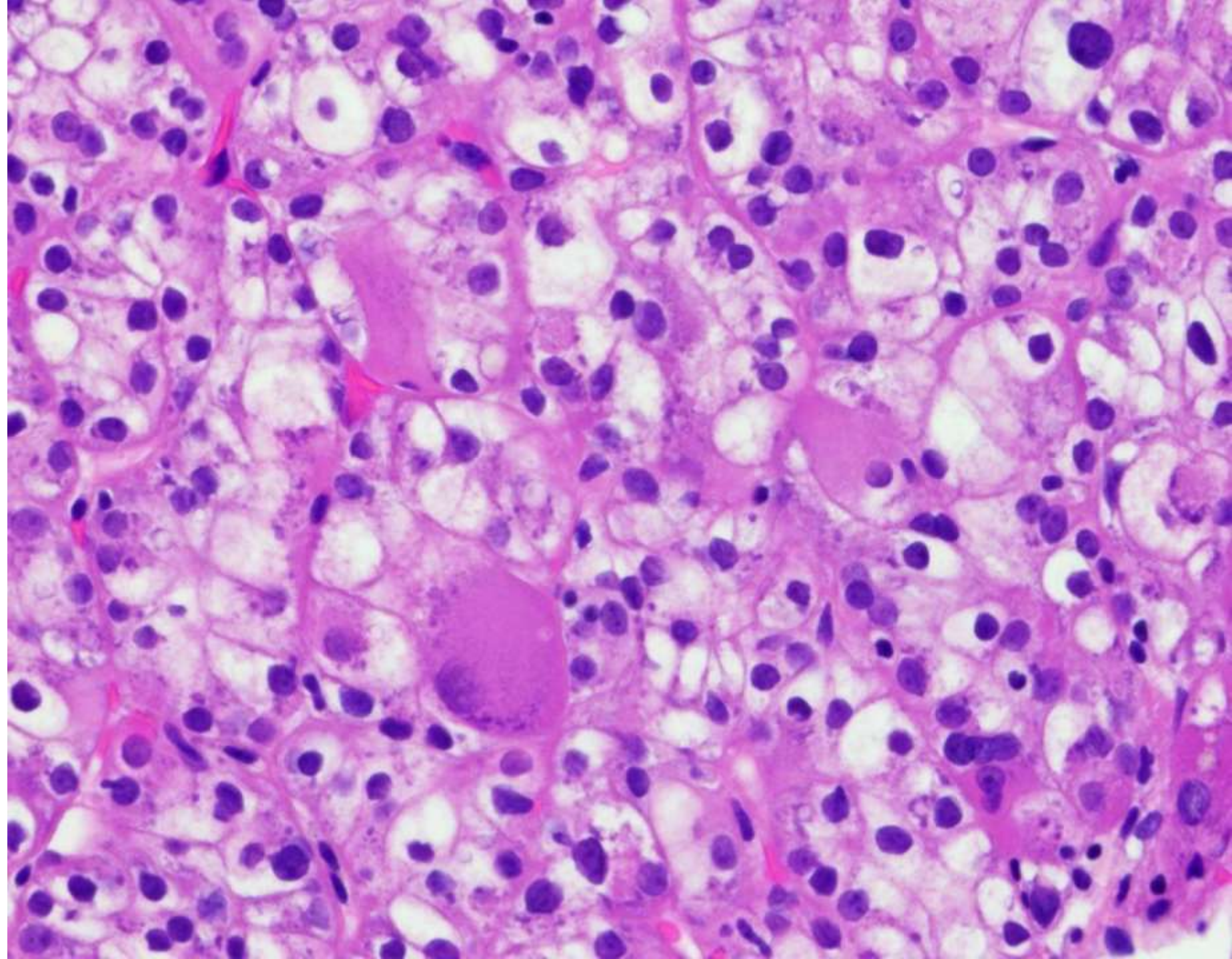
Reproductive age F with 2cm renal mass.











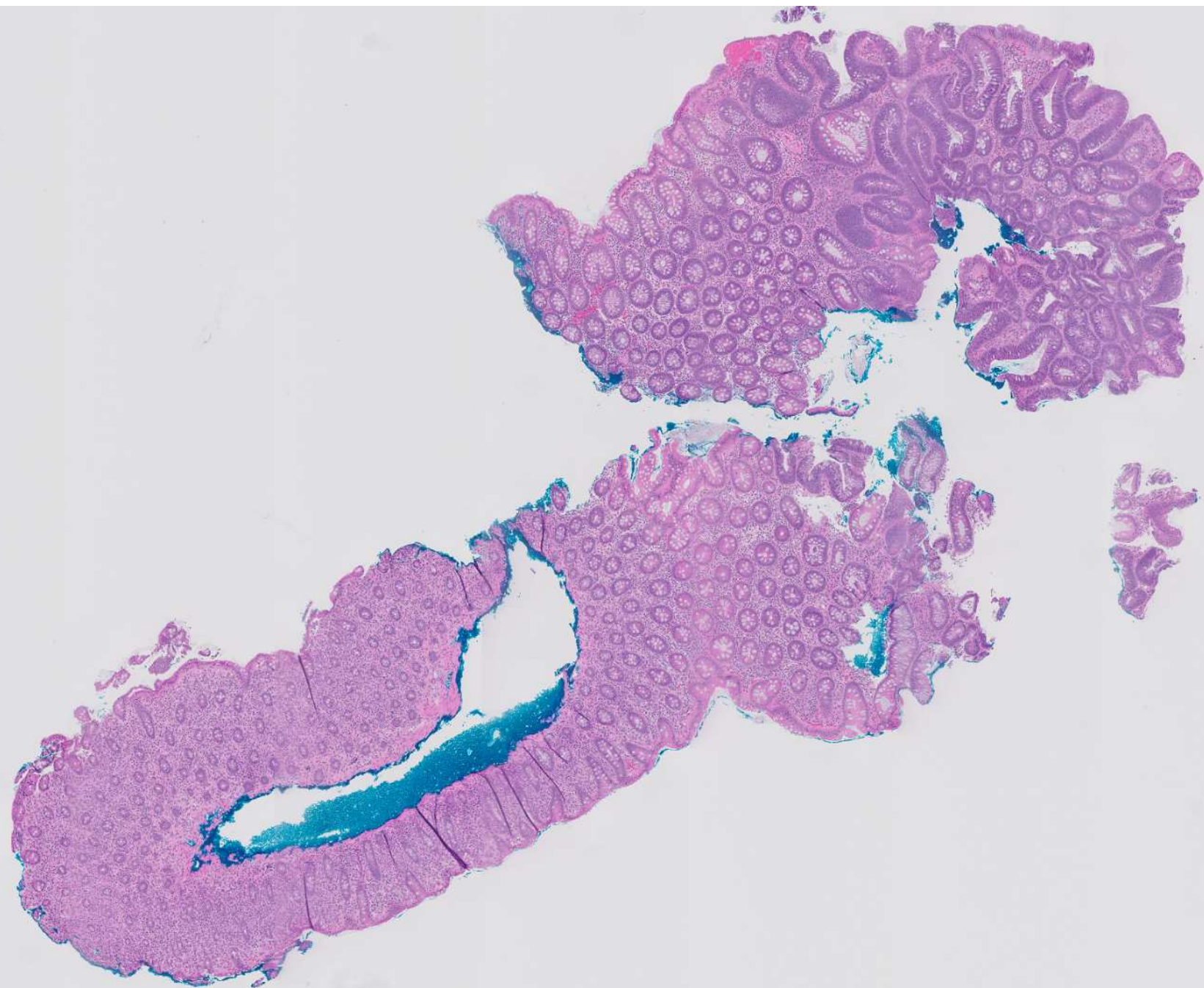
DIAGNOSIS?

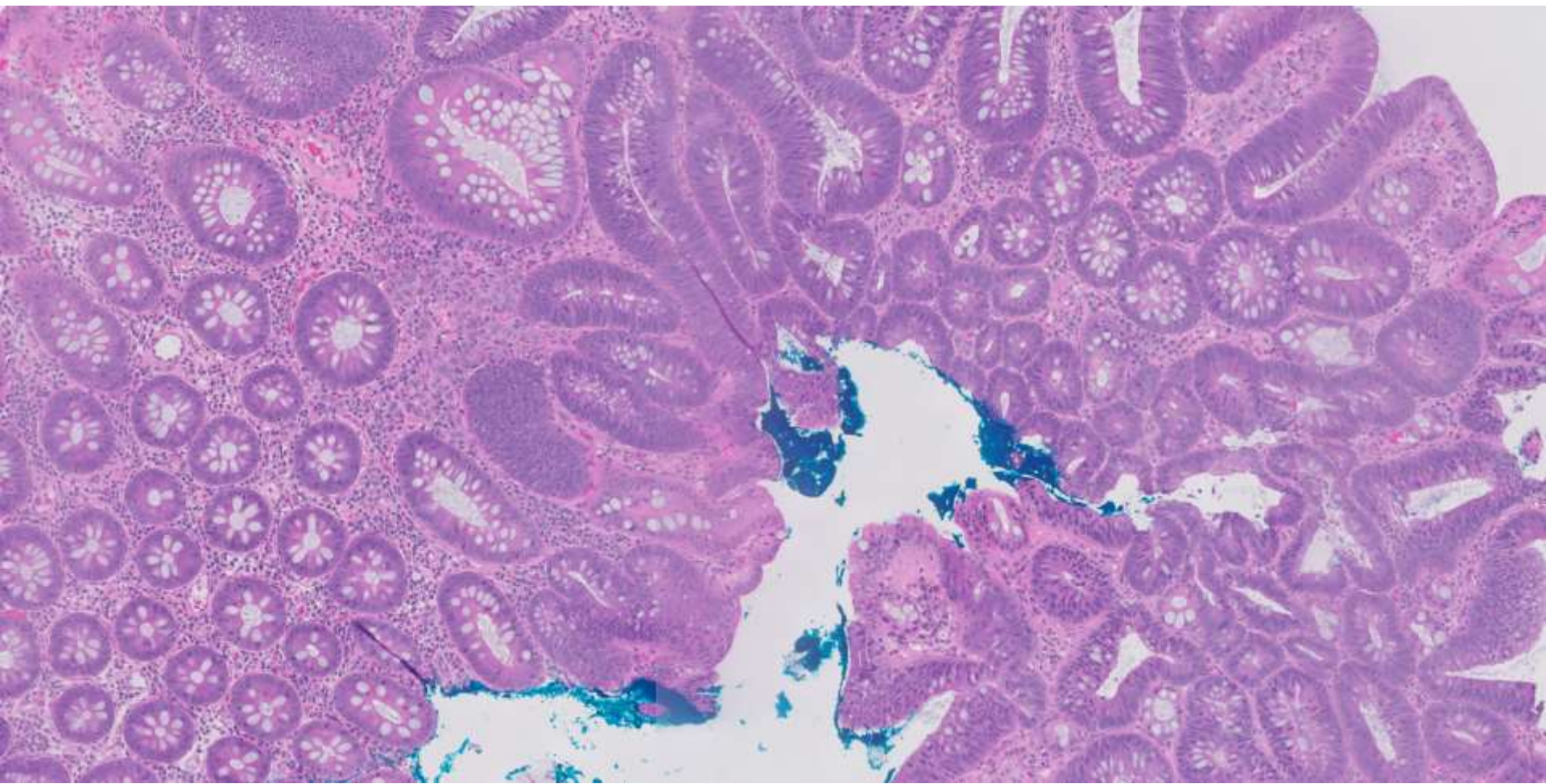


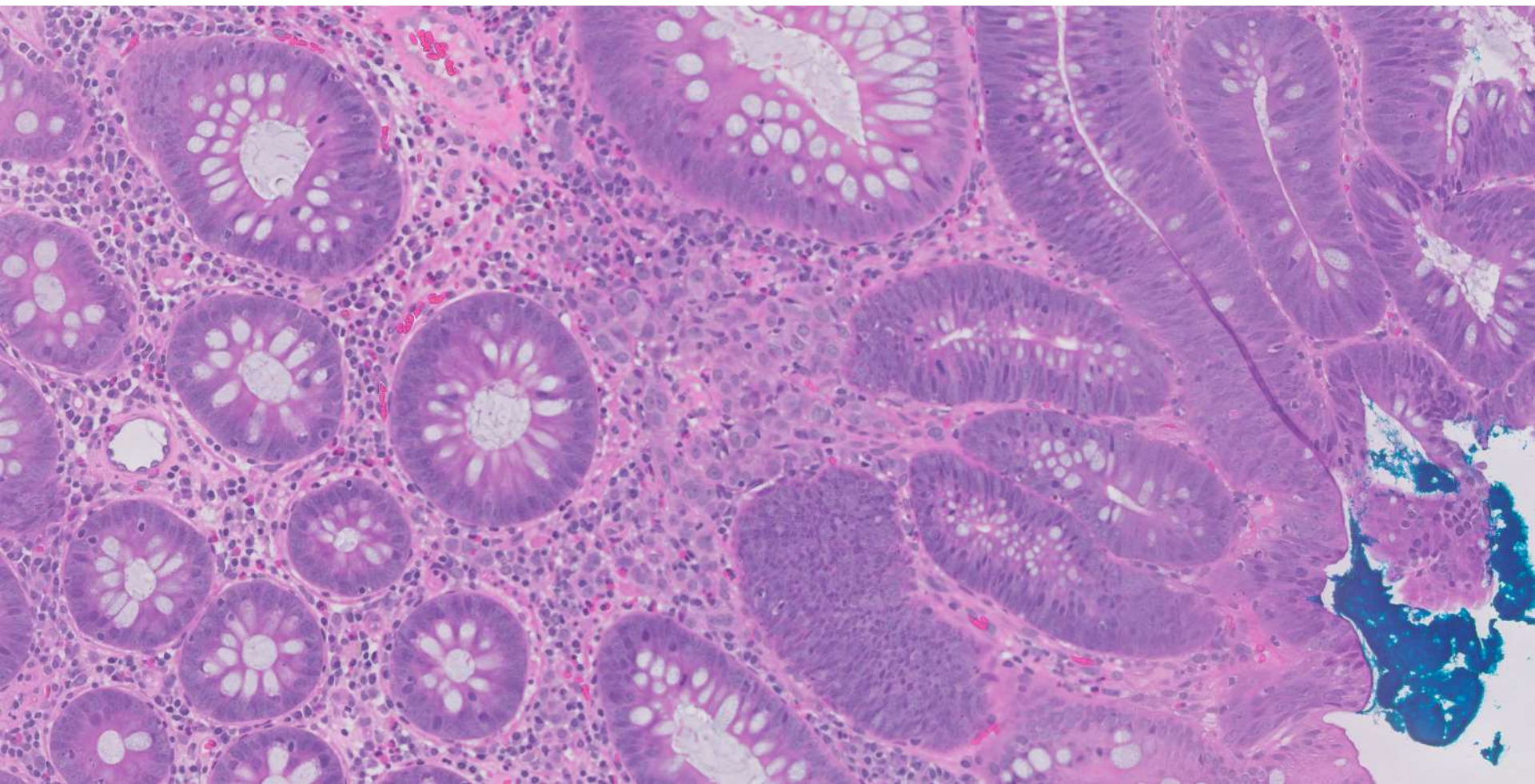
22-1207

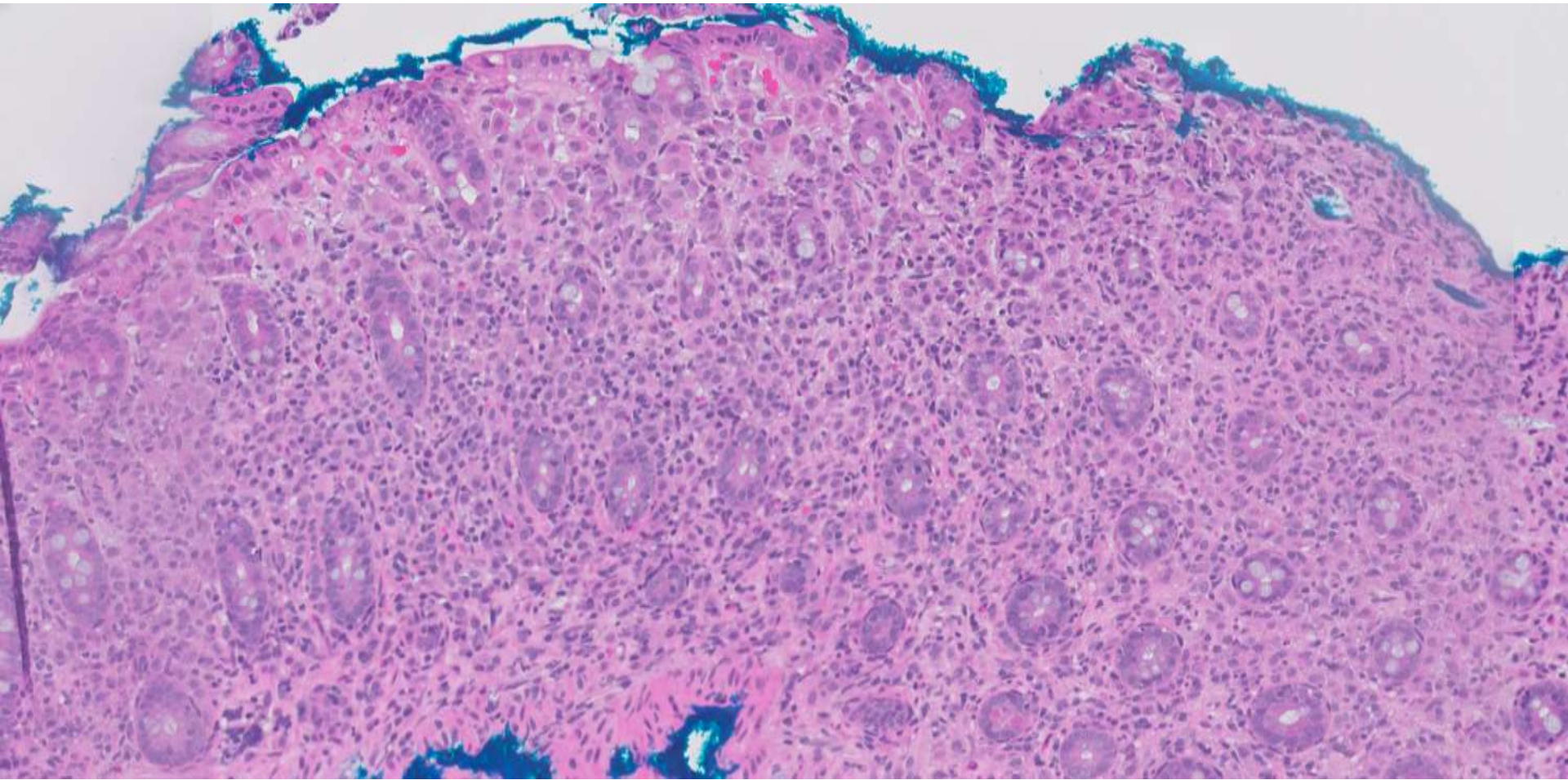
Dave Bingham; Stanford

70ish F undergoes screening colonoscopy.

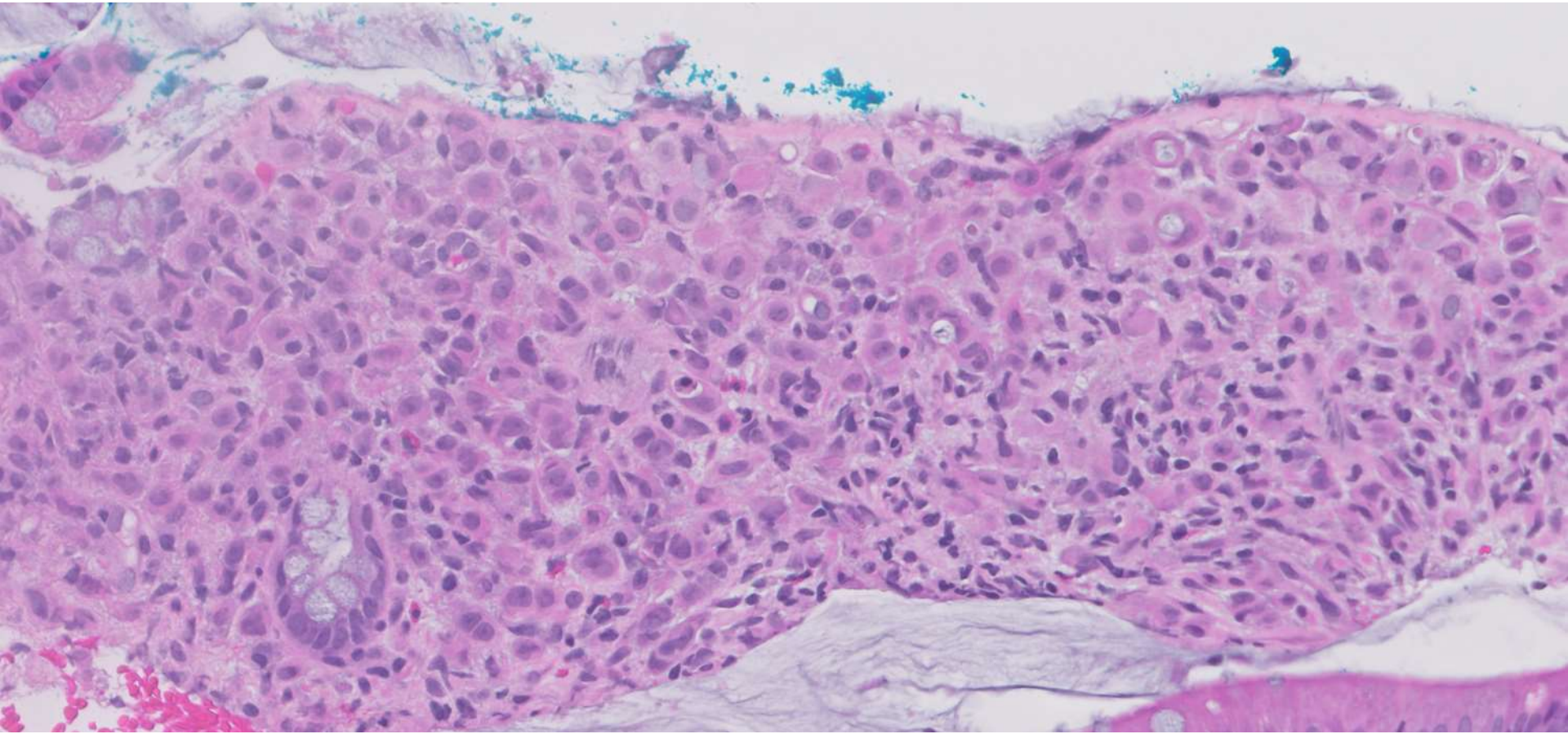












DIAGNOSIS?



EVALUATION QR CODE!
Hold smartphone camera on code

