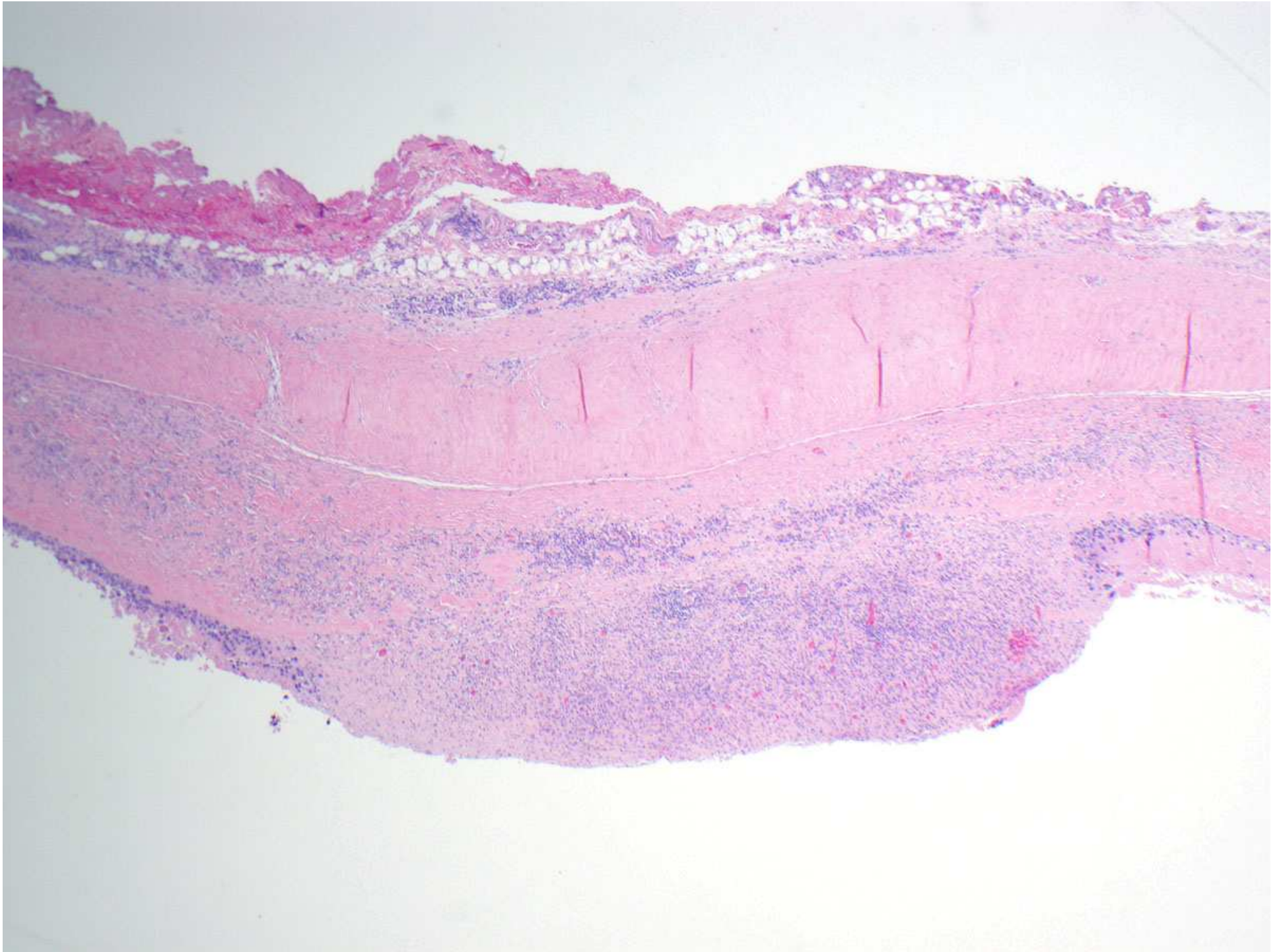
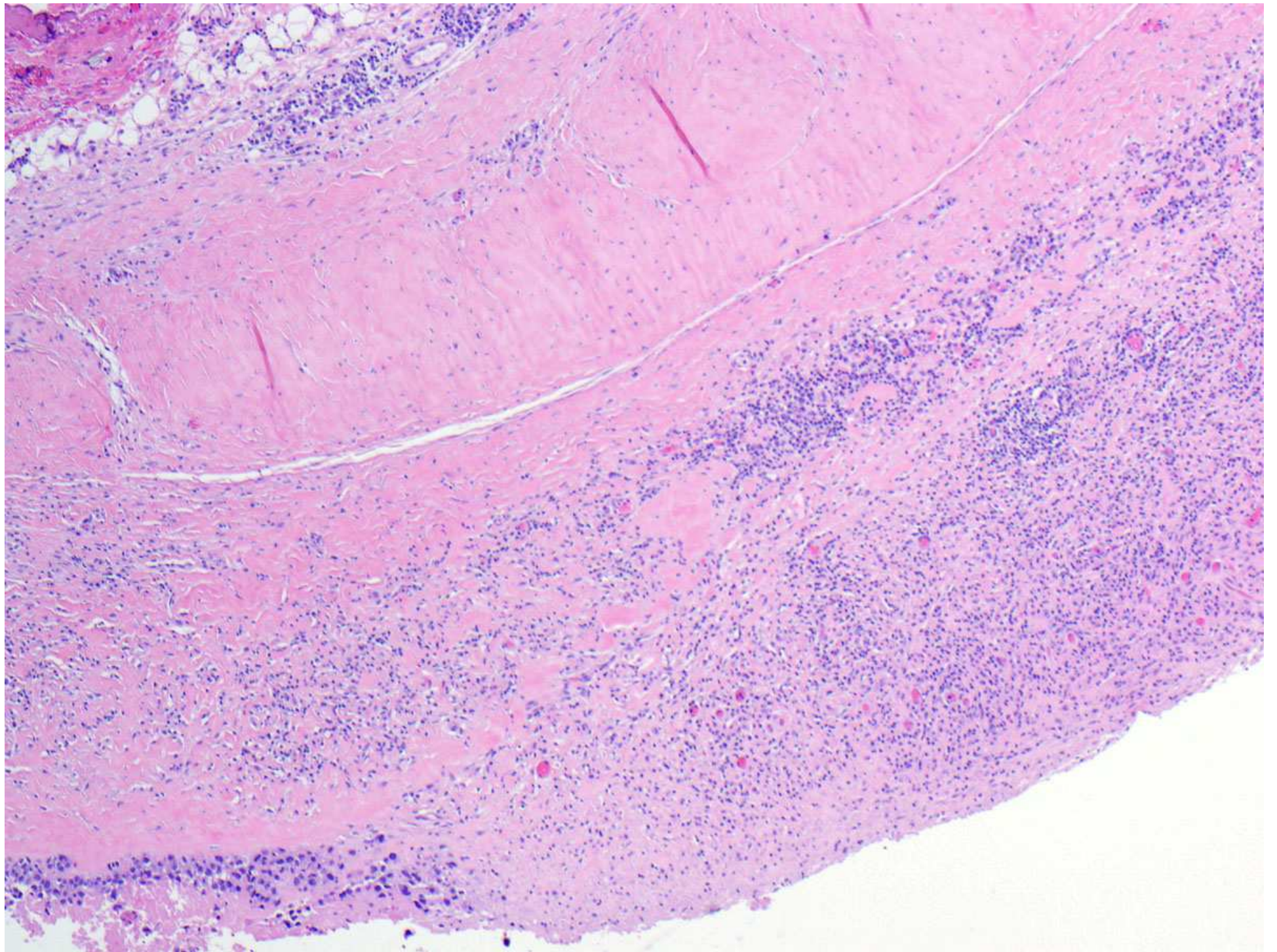
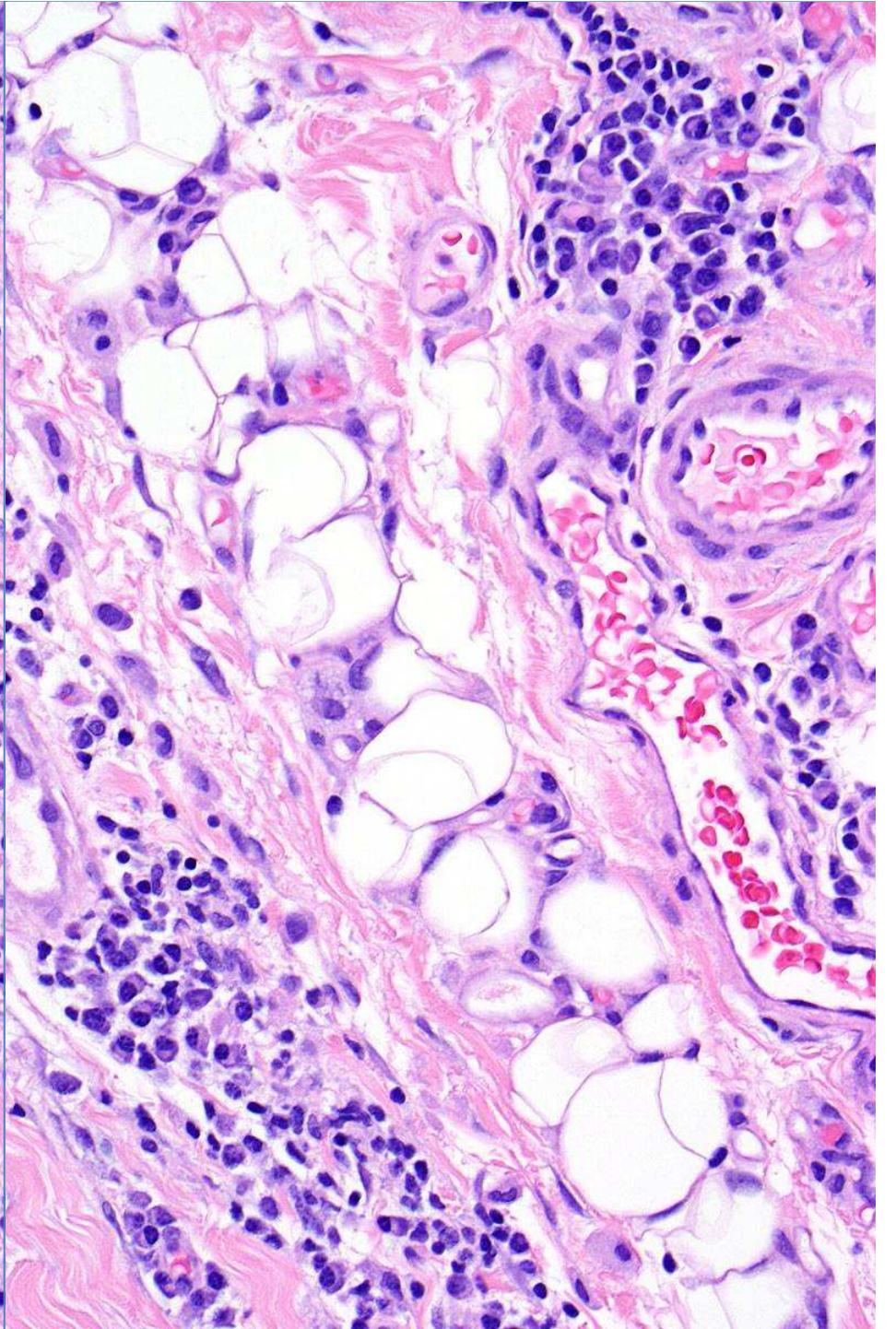
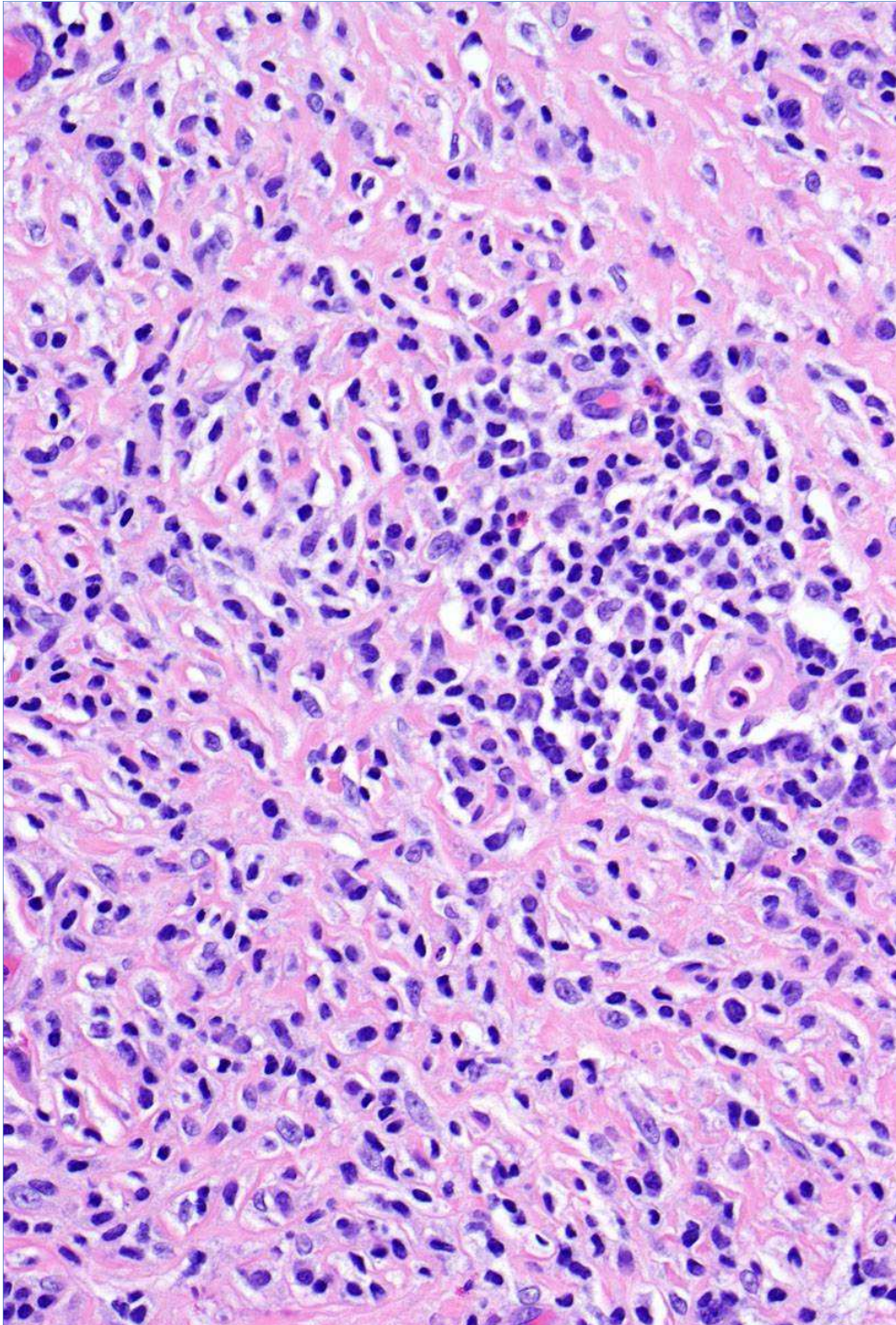


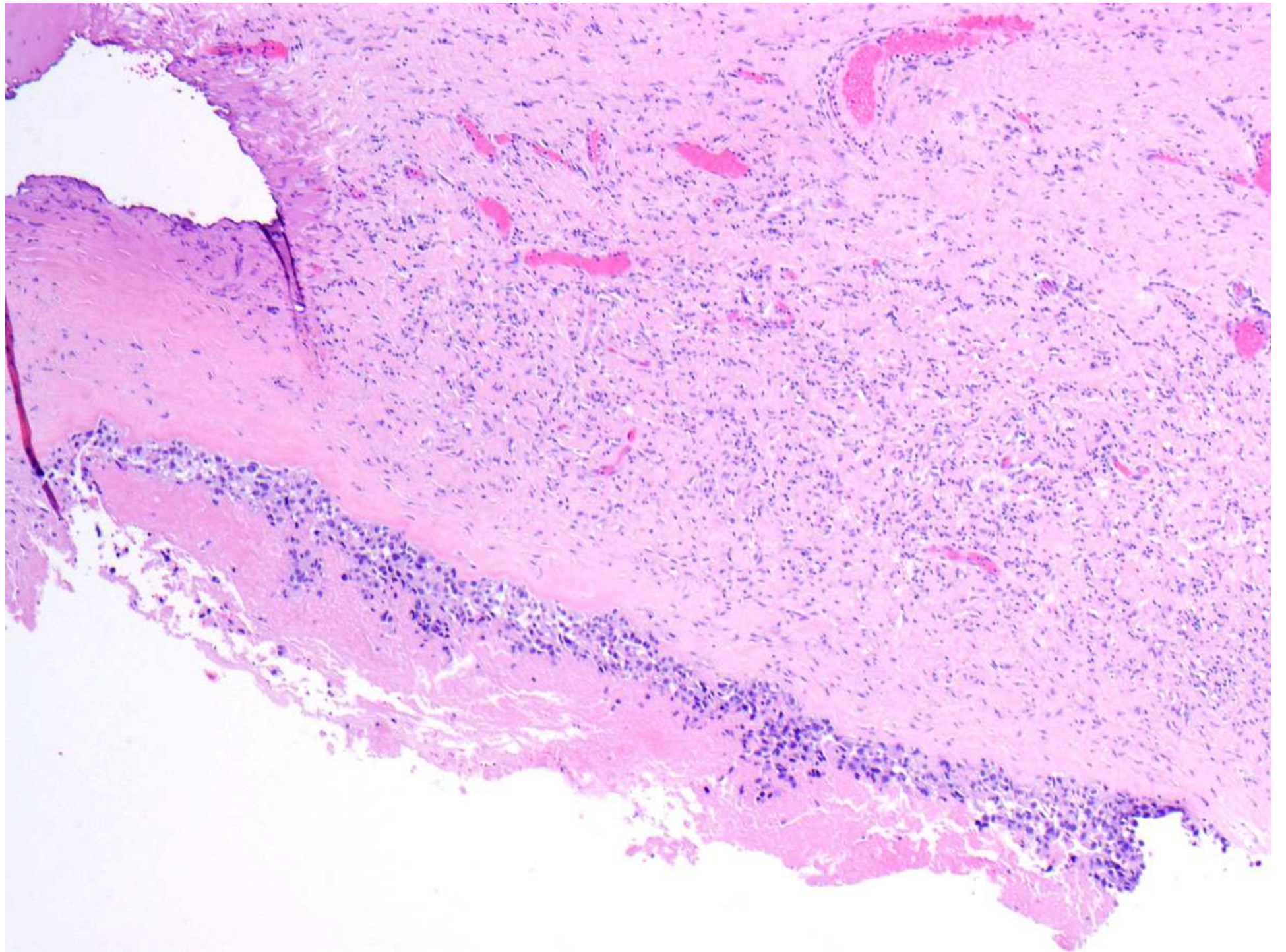
## Case 4

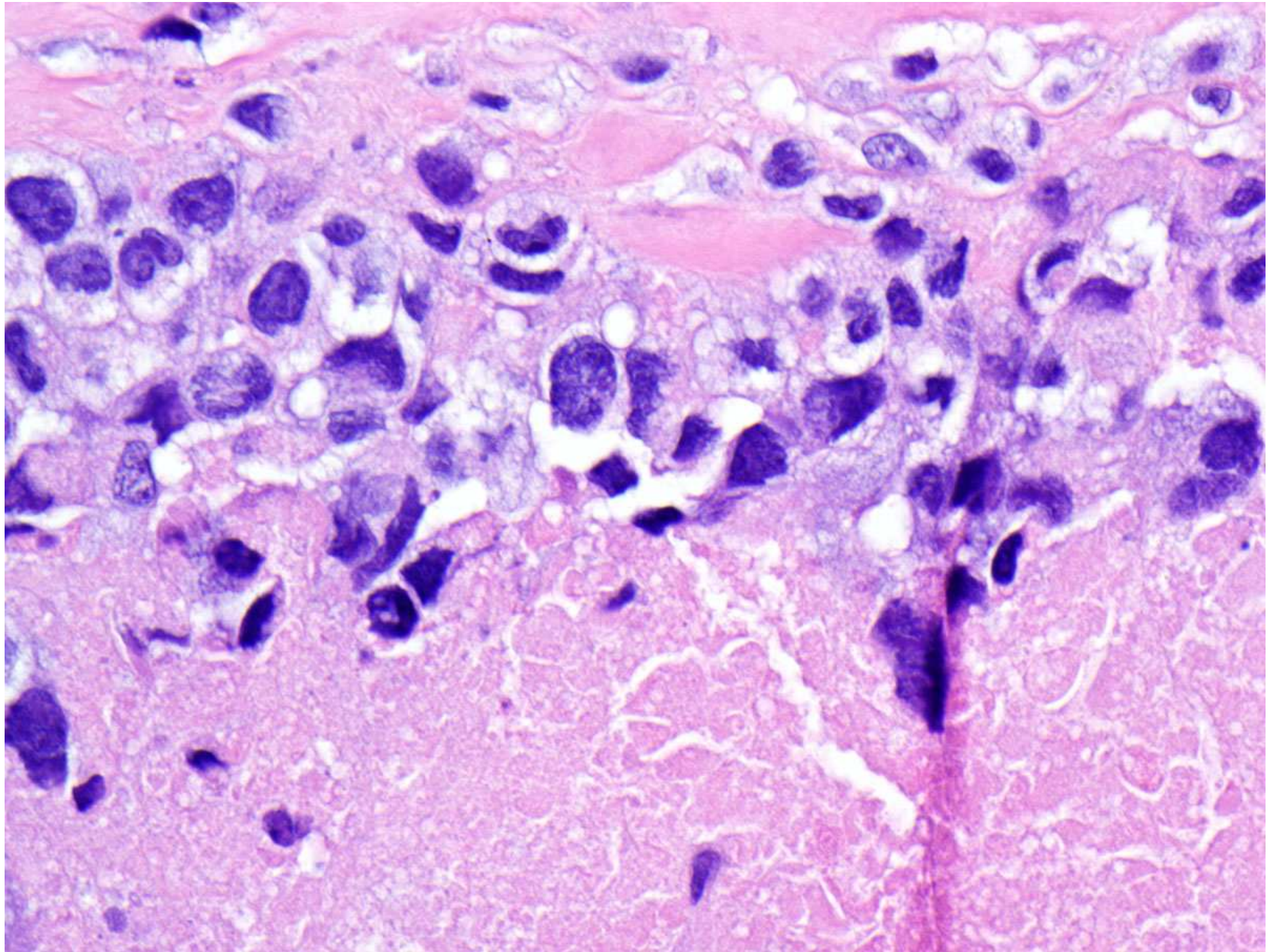
- 48 year old woman with saline breast implants as part of an augmentation mammoplasty procedure performed in 1999. In 2008 the right breast became swollen and had fluid evacuated twice. In 2010, the fluid re-accumulated and the saline implant was taken out along with the breast capsule. Scattered nodules on the breast capsule aspect were noted grossly and were sampled.

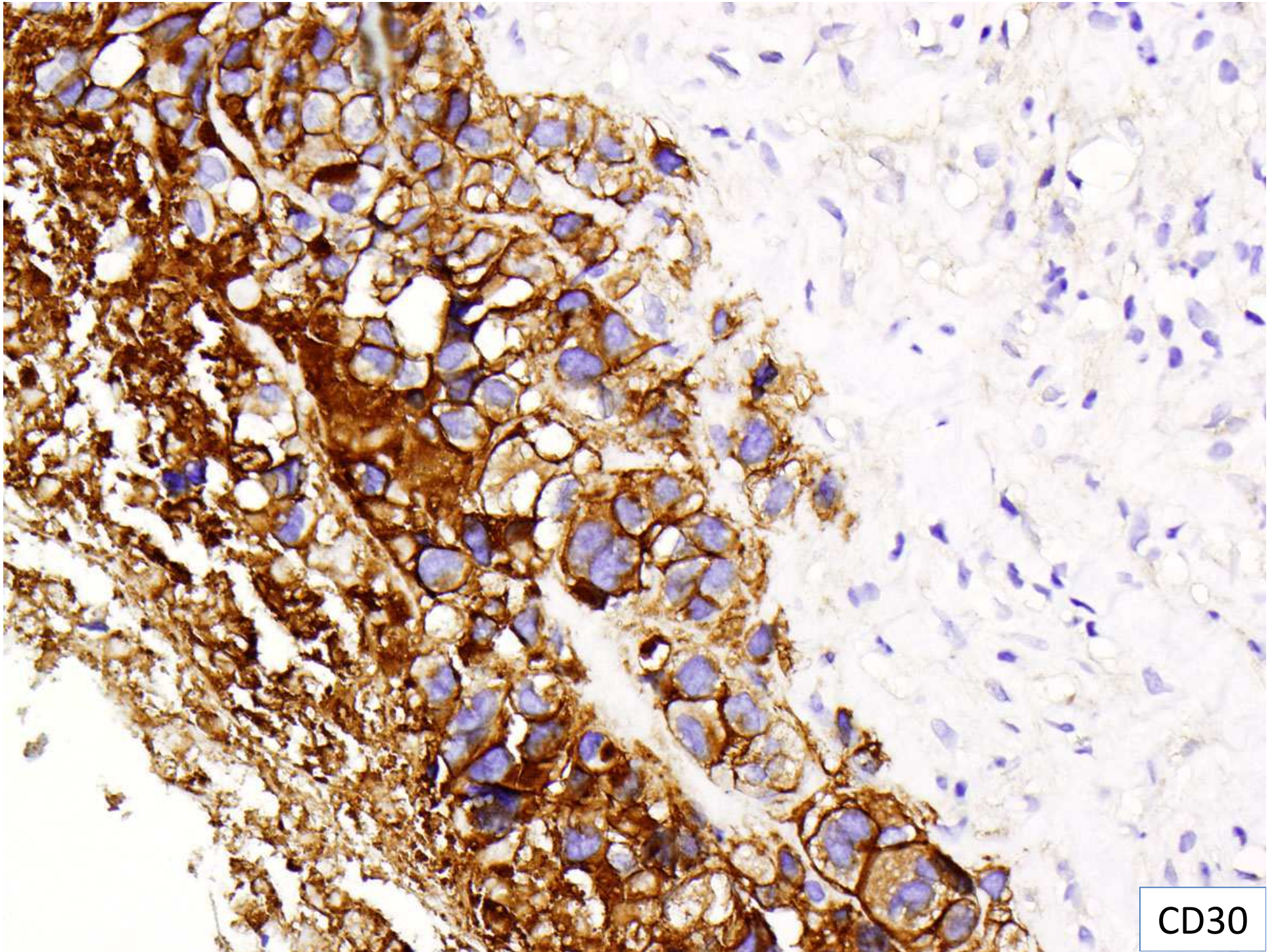












CD30