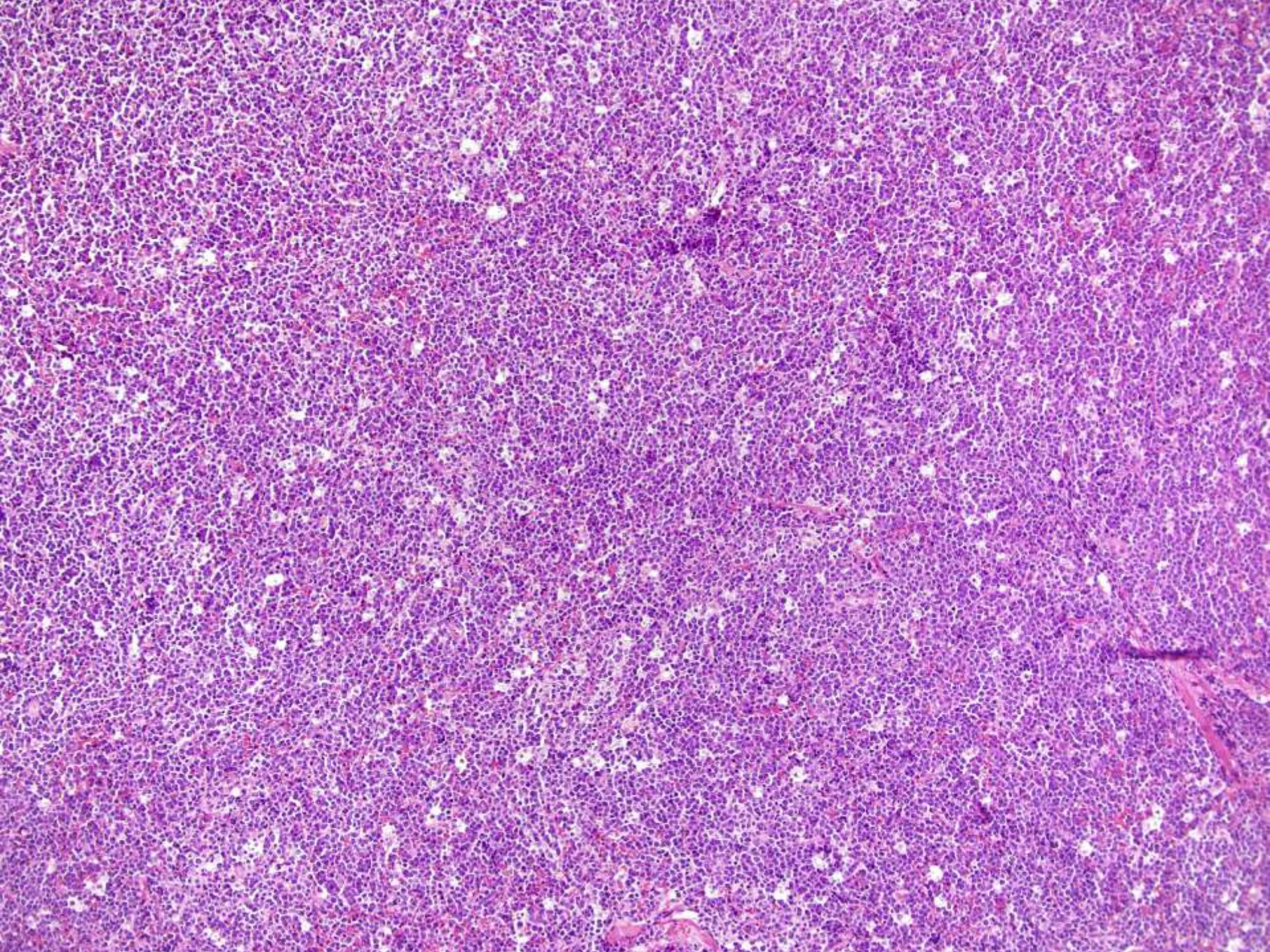
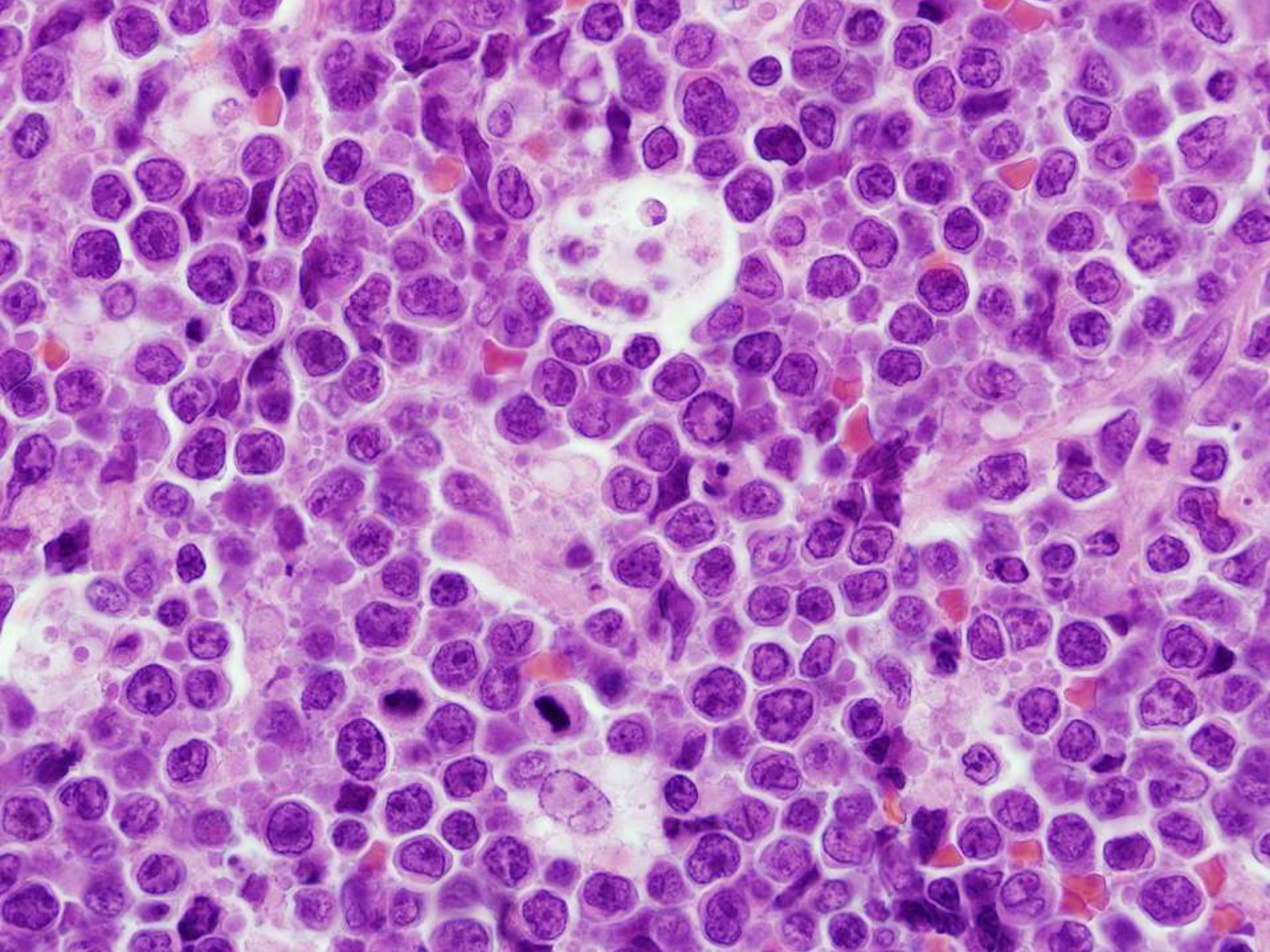
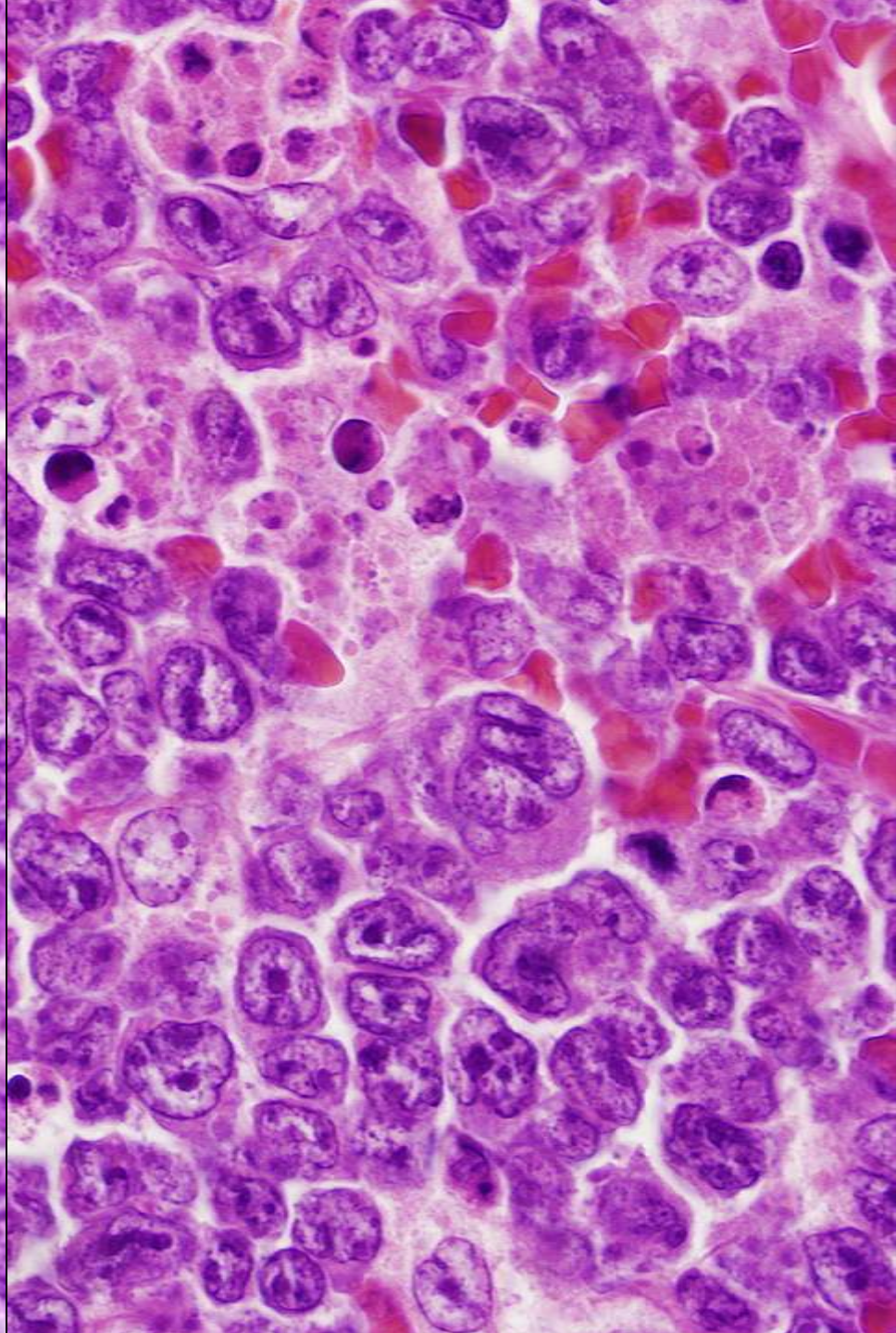
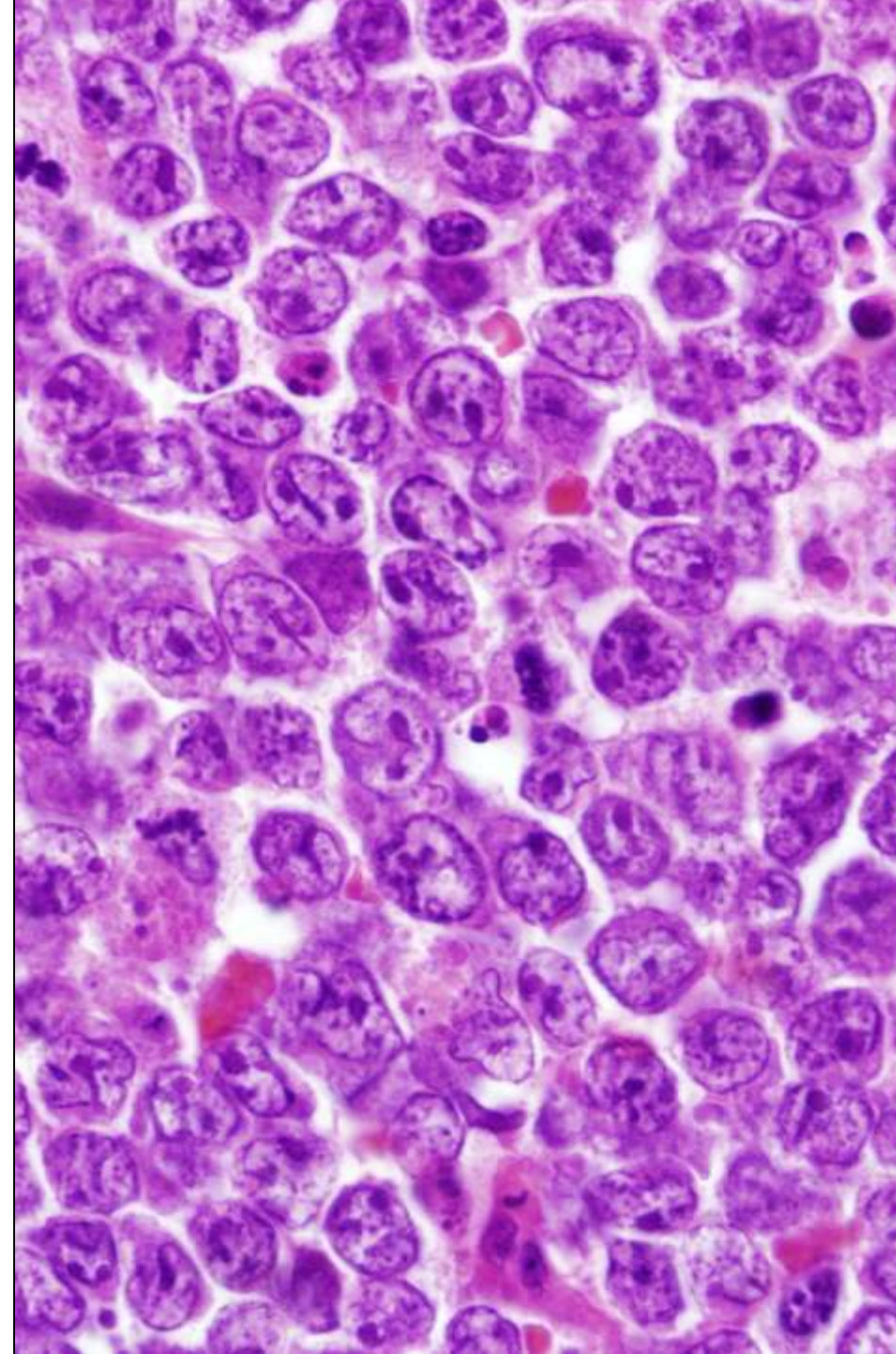


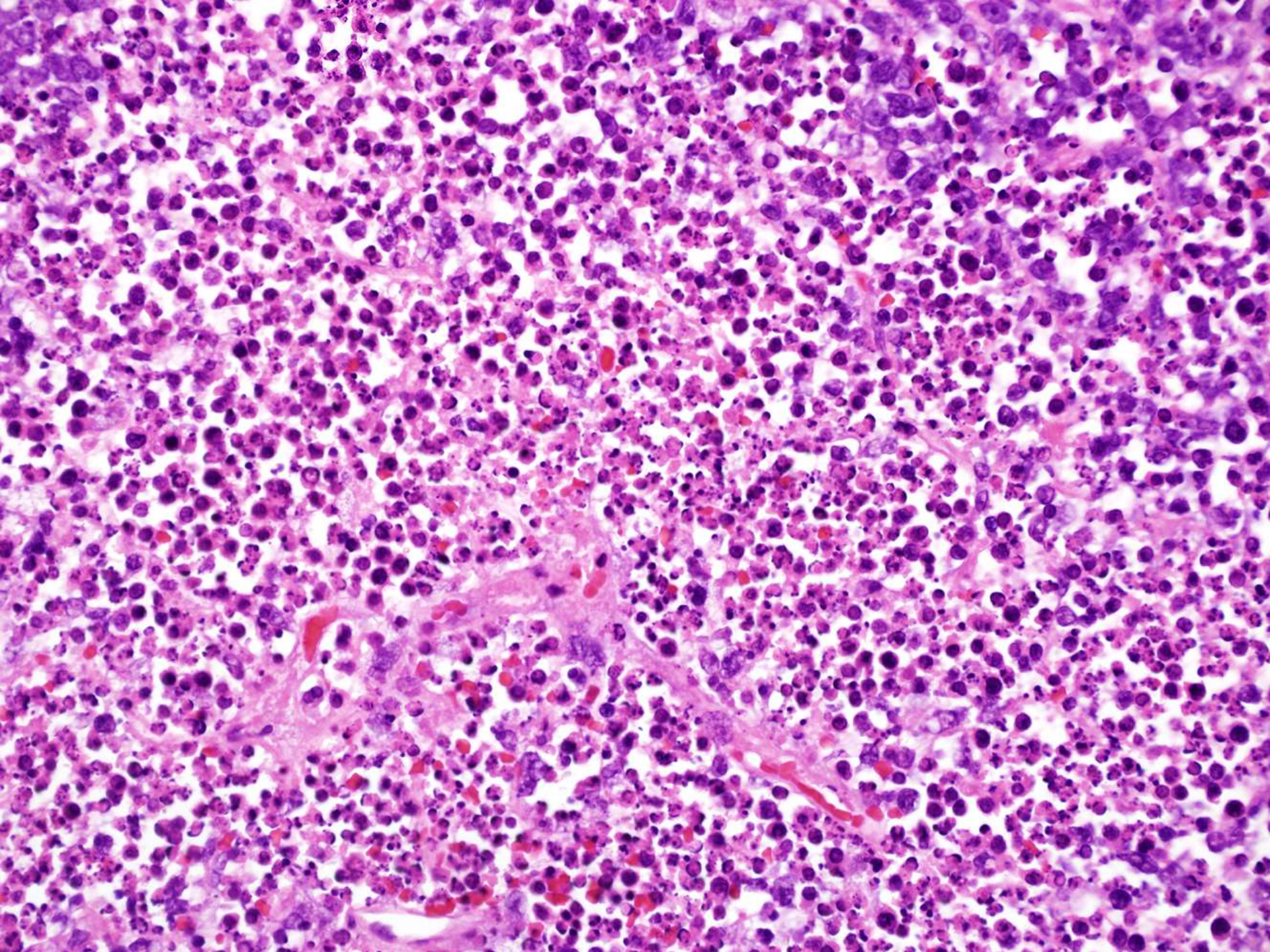
Case 9

- 88 year old female bumped her head while bending over. She had been seen in the emergency room, and a CT scan at that time, suggested that there was a hematoma. However, over the next month it continued to grow, and a repeat CT scan and evaluation in the hospital revealed an enlarging mass which appeared to start on the scalp with invasion of the bone extending into the brain. Subsequent studies showed widespread disease. A biopsy was performed.









Ki-67

